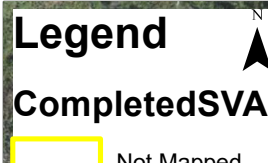


# Siletz 1



## Legend

### CompletedSVA

Not Mapped

### Ag Types

Ag Infrastructure

Bare

Bare-Ag

Grass

Grass-Ag

Not Ag

Not Mapped

Shrub

Shrub-Ag

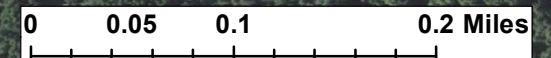
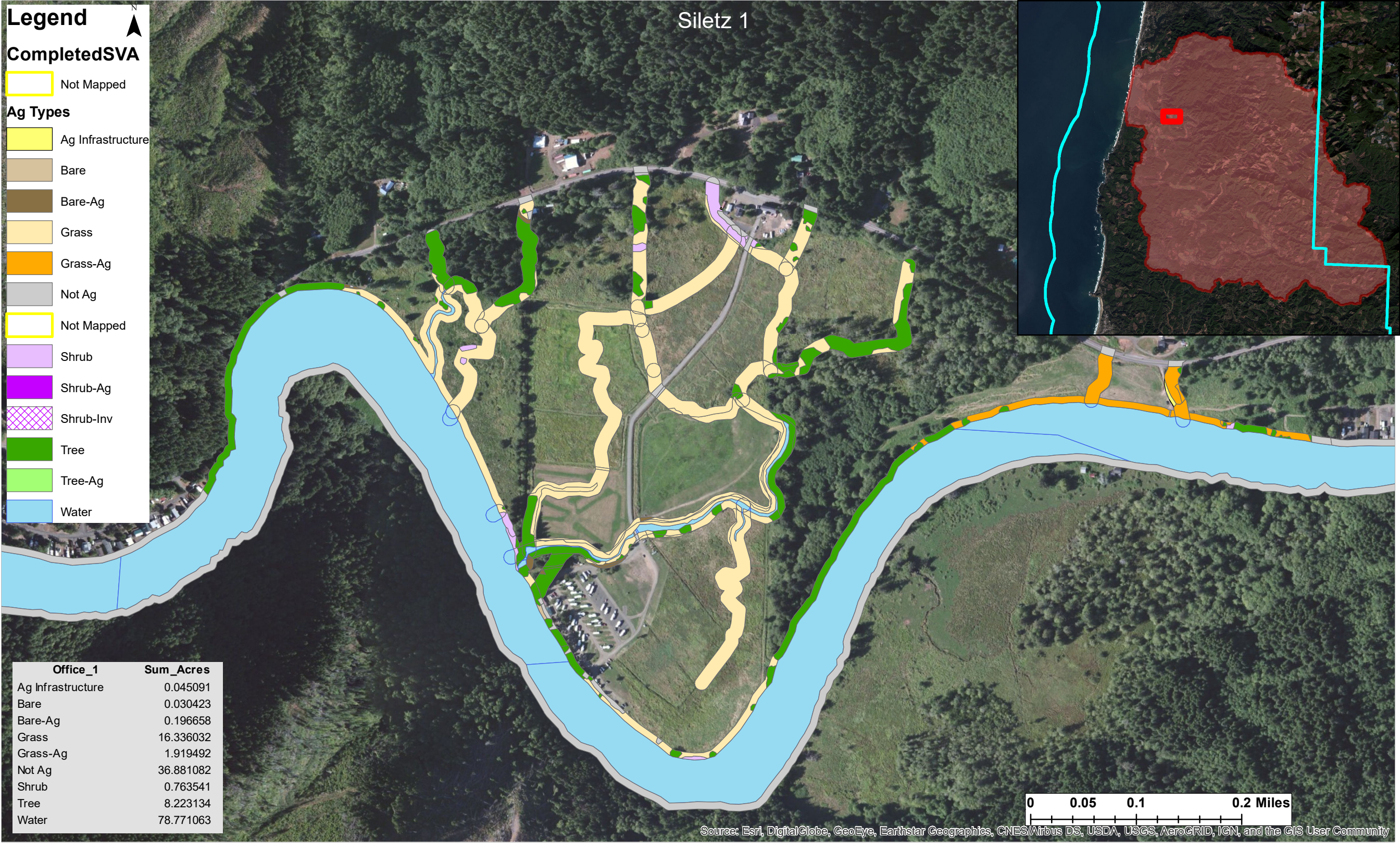
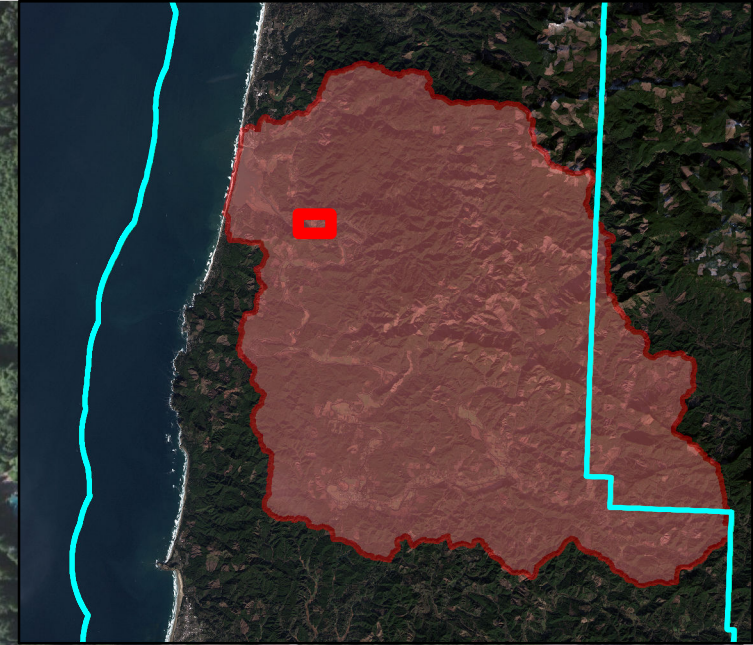
Shrub-Inv

Tree

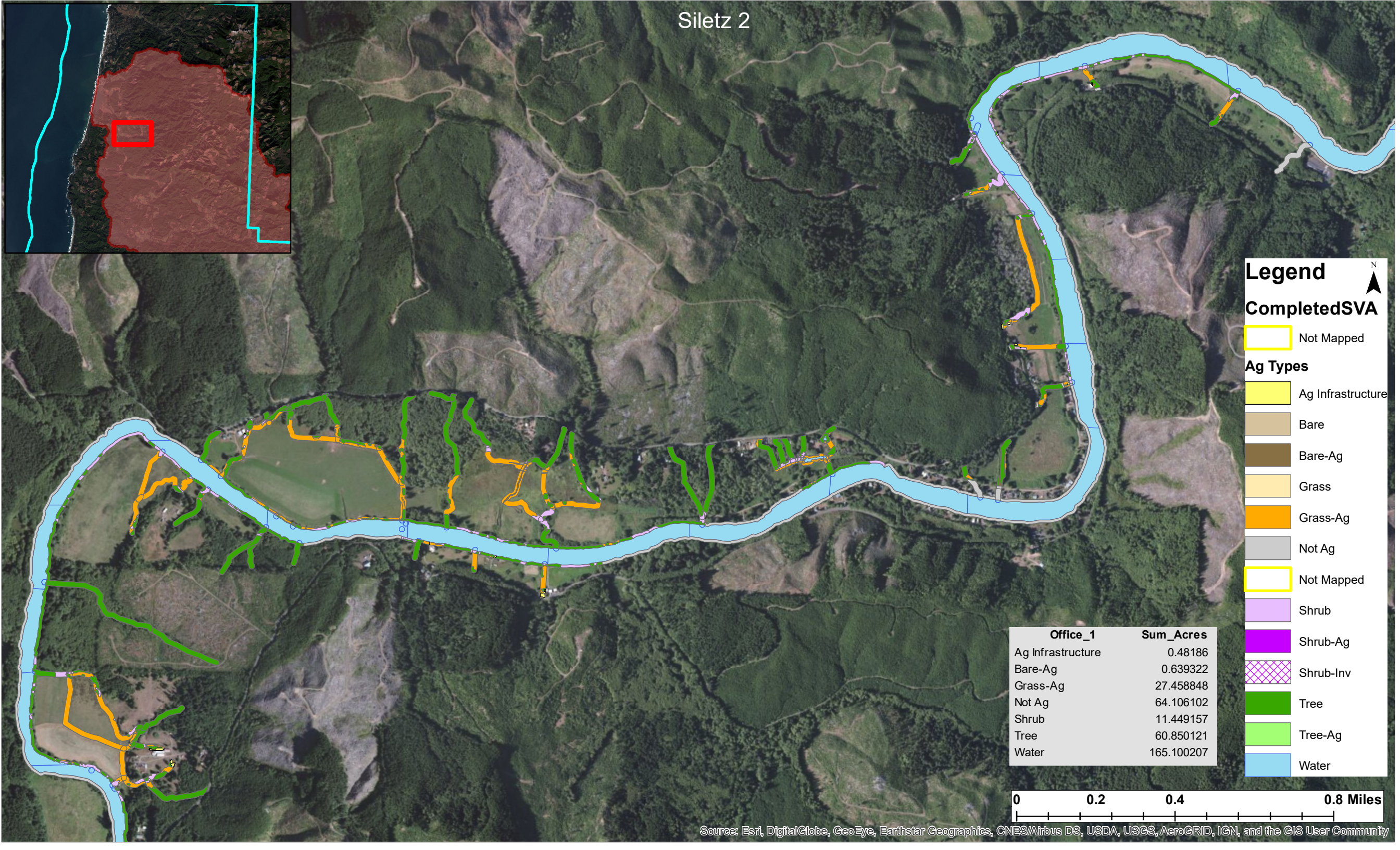
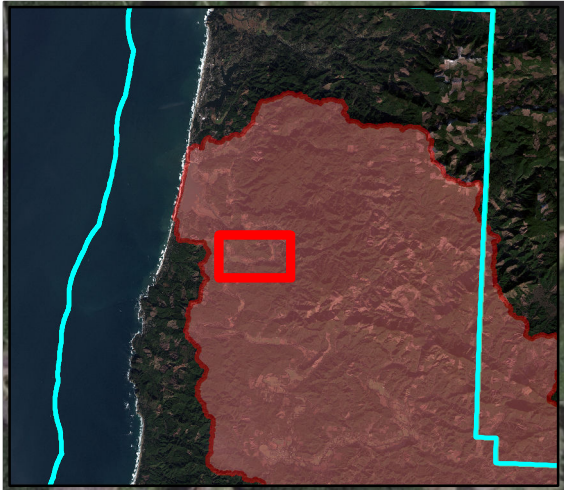
Tree-Ag

Water

Office_1	Sum_Acres
Ag Infrastructure	0.045091
Bare	0.030423
Bare-Ag	0.196658
Grass	16.336032
Grass-Ag	1.919492
Not Ag	36.881082
Shrub	0.763541
Tree	8.223134
Water	78.771063



# Siletz 2



### Legend

CompletedSVA

- Not Mapped

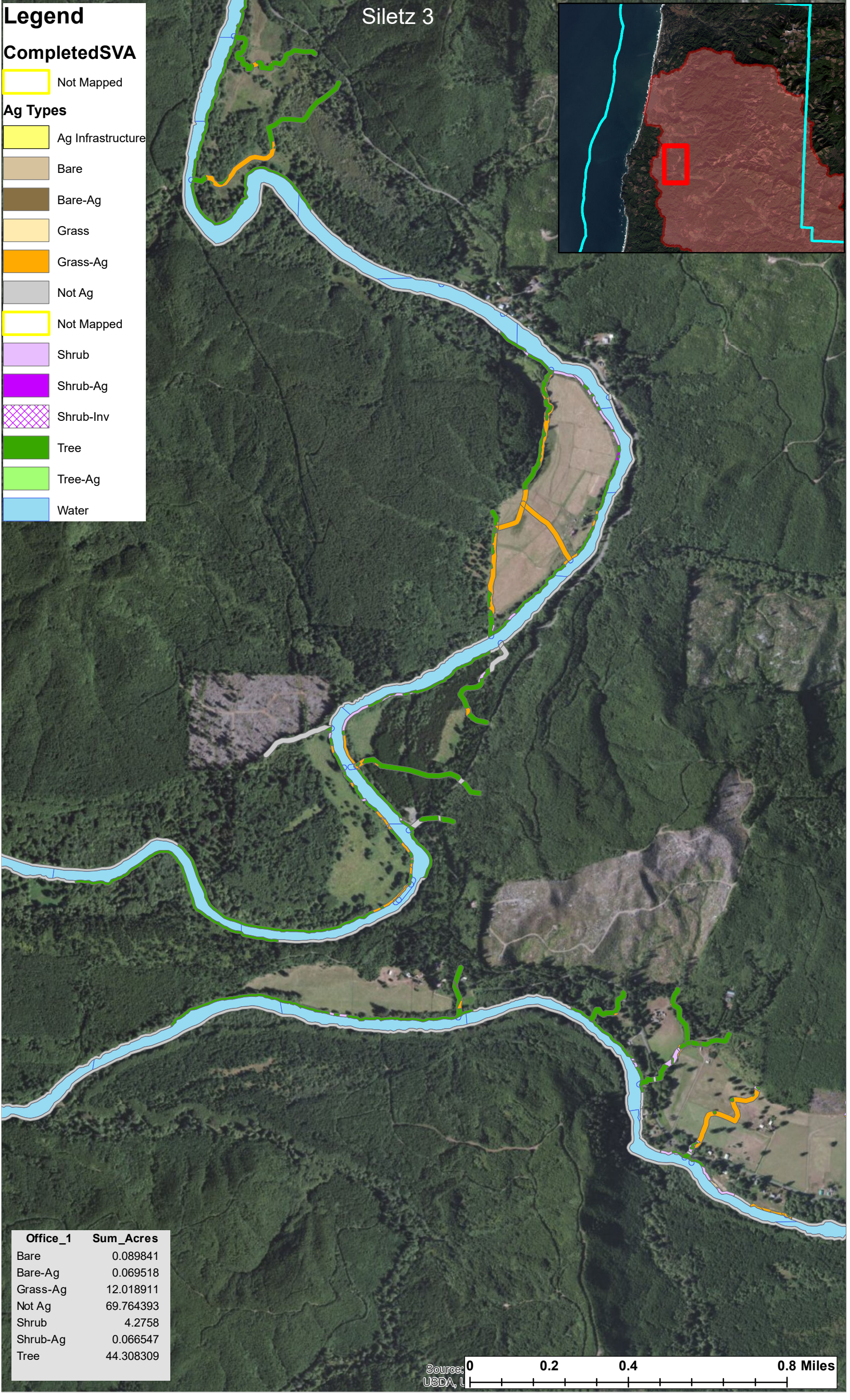
Ag Types

- Ag Infrastructure
- Bare
- Bare-Ag
- Grass
- Grass-Ag
- Not Ag
- Not Mapped
- Shrub
- Shrub-Ag
- Shrub-Inv
- Tree
- Tree-Ag
- Water

Office_1	Sum_Acres
Ag Infrastructure	0.48186
Bare-Ag	0.639322
Grass-Ag	27.458848
Not Ag	64.106102
Shrub	11.449157
Tree	60.850121
Water	165.100207



Source: Esri, DigitalGlobe, GeoEye, Earthstar Geographics, CNES/Airbus DS, USDA, USGS, AeroGRID, IGN, and the GIS User Community



# Siletz 3

## Legend

### CompletedSVA

Not Mapped

### Ag Types

Ag Infrastructure

Bare

Bare-Ag

Grass

Grass-Ag

Not Ag

Not Mapped

Shrub

Shrub-Ag

Shrub-Inv

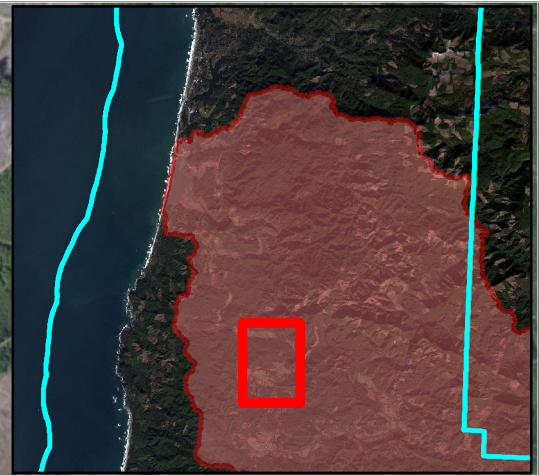
Tree

Tree-Ag

Water

Office_1	Sum_Acres
Bare	0.089841
Bare-Ag	0.069518
Grass-Ag	12.018911
Not Ag	69.764393
Shrub	4.2758
Shrub-Ag	0.066547
Tree	44.308309

# Siletz 4



## Legend

### CompletedSVA

Not Mapped

### Ag Types

Ag Infrastructure

Bare

Bare-Ag

Grass

Grass-Ag

Not Ag

Not Mapped

Shrub

Shrub-Ag

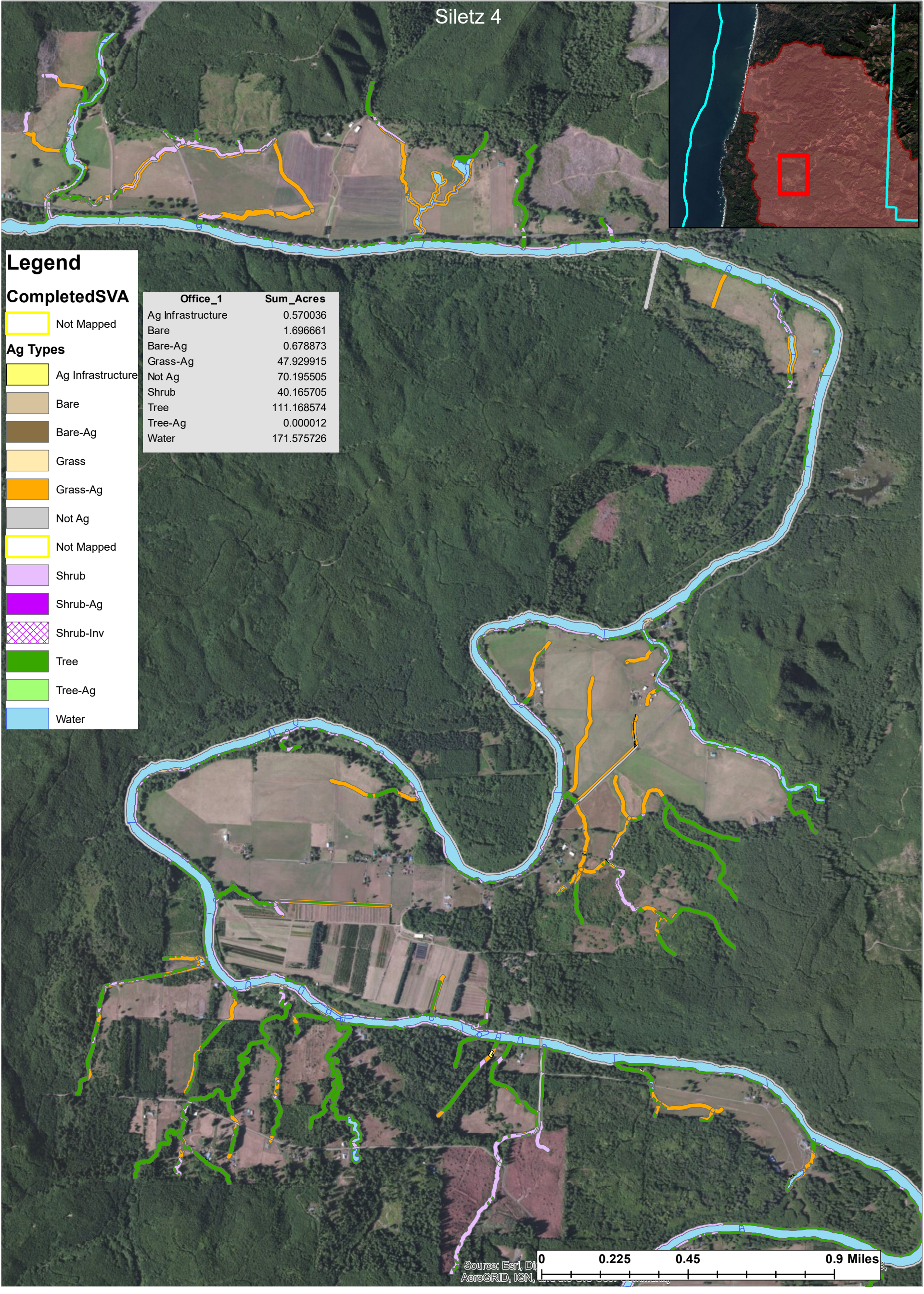
Shrub-Inv

Tree

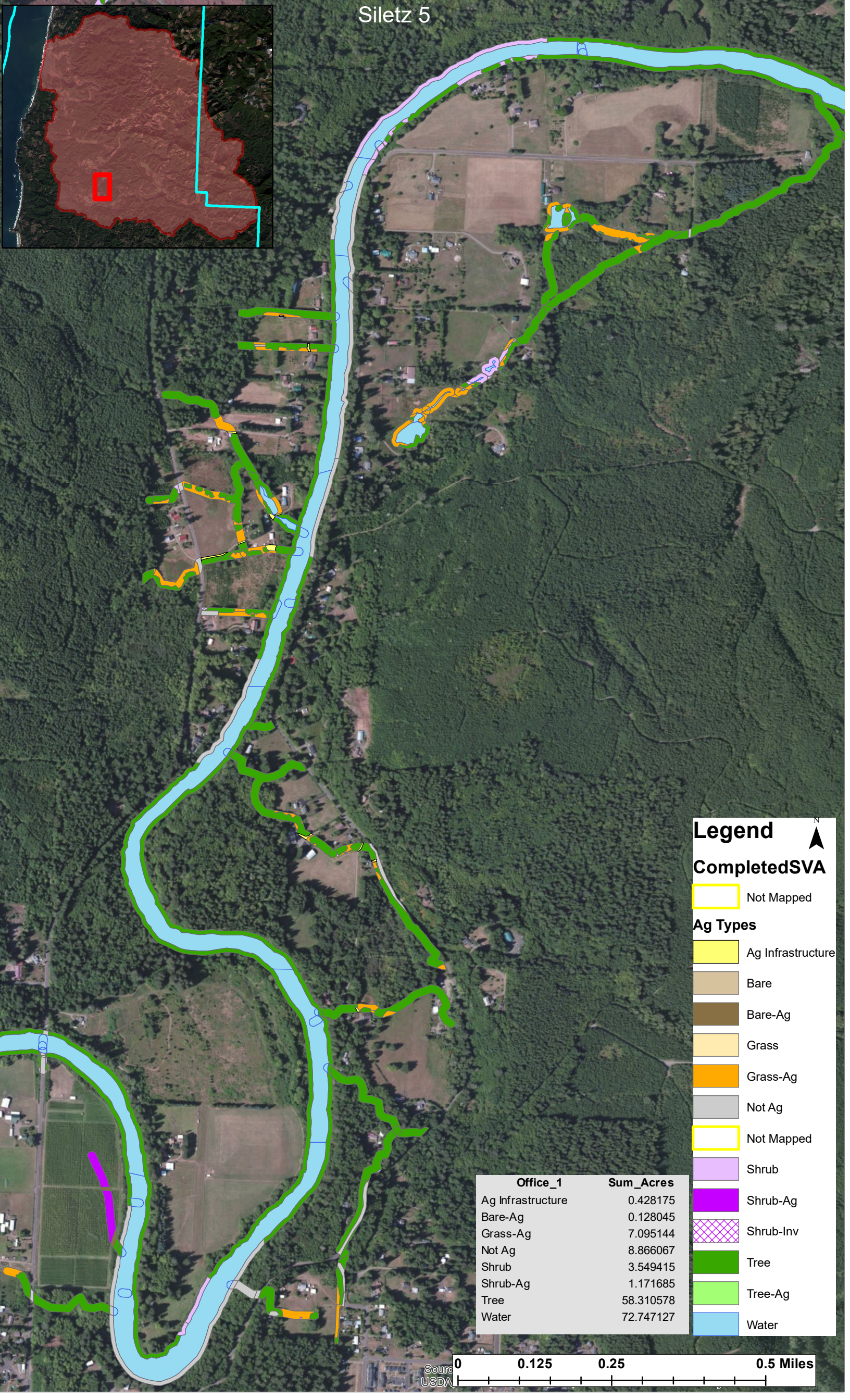
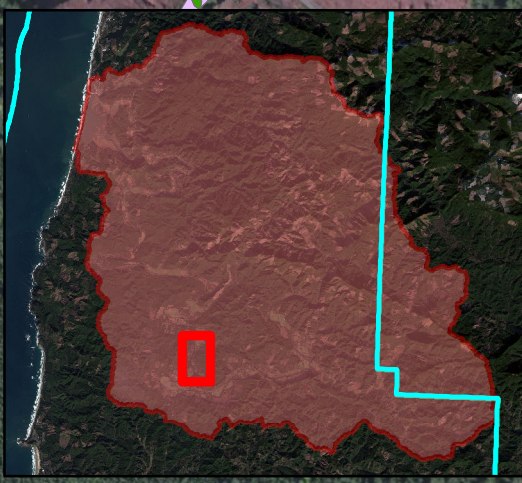
Tree-Ag

Water

Office_1	Sum_Acres
Ag Infrastructure	0.570036
Bare	1.696661
Bare-Ag	0.678873
Grass-Ag	47.929915
Not Ag	70.195505
Shrub	40.165705
Tree	111.168574
Tree-Ag	0.000012
Water	171.575726



# Siletz 5





**Legend** 

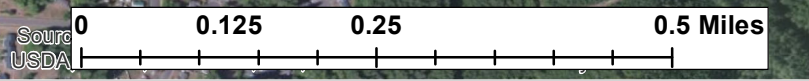
**CompletedSVA**

-  Not Mapped

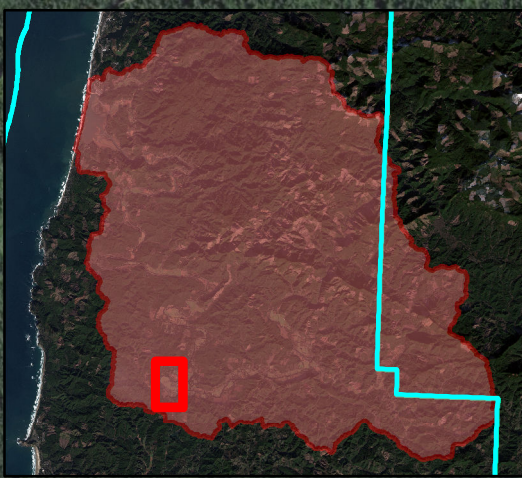
**Ag Types**

-  Ag Infrastructure
-  Bare
-  Bare-Ag
-  Grass
-  Grass-Ag
-  Not Ag
-  Not Mapped
-  Shrub
-  Shrub-Ag
-  Shrub-Inv
-  Tree
-  Tree-Ag
-  Water

Office_1	Sum_Acres
Ag Infrastructure	0.428175
Bare-Ag	0.128045
Grass-Ag	7.095144
Not Ag	8.866067
Shrub	3.549415
Shrub-Ag	1.171685
Tree	58.310578
Water	72.747127



# Siletz 6



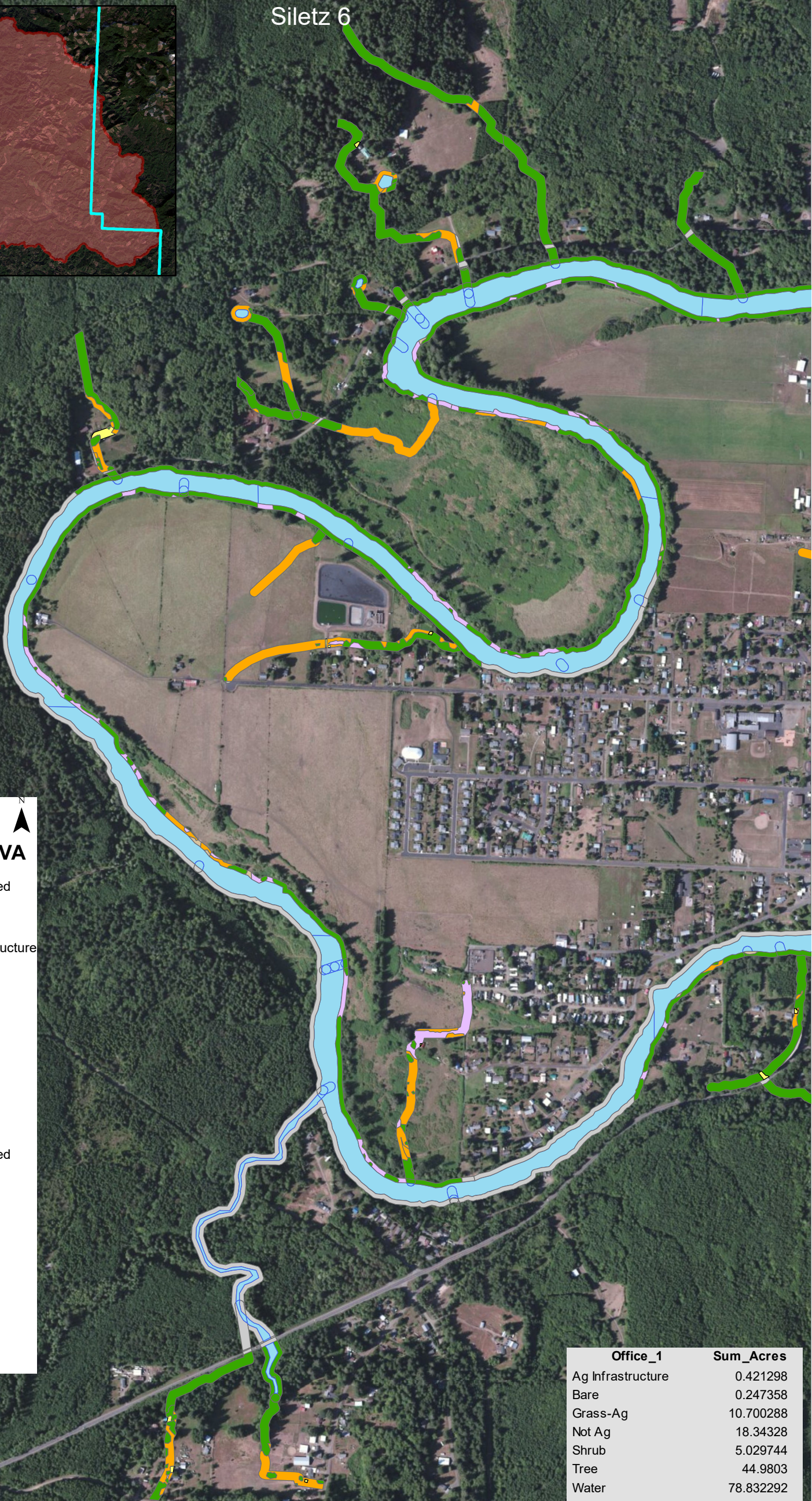
**Legend**

**CompletedSVA**

- Not Mapped

**Ag Types**

- Ag Infrastructure
- Bare
- Bare-Ag
- Grass
- Grass-Ag
- Not Ag
- Not Mapped
- Shrub
- Shrub-Ag
- Shrub-Inv
- Tree
- Tree-Ag
- Water



Office_1	Sum_Acres
Ag Infrastructure	0.421298
Bare	0.247358
Grass-Ag	10.700288
Not Ag	18.34328
Shrub	5.029744
Tree	44.9803
Water	78.832292

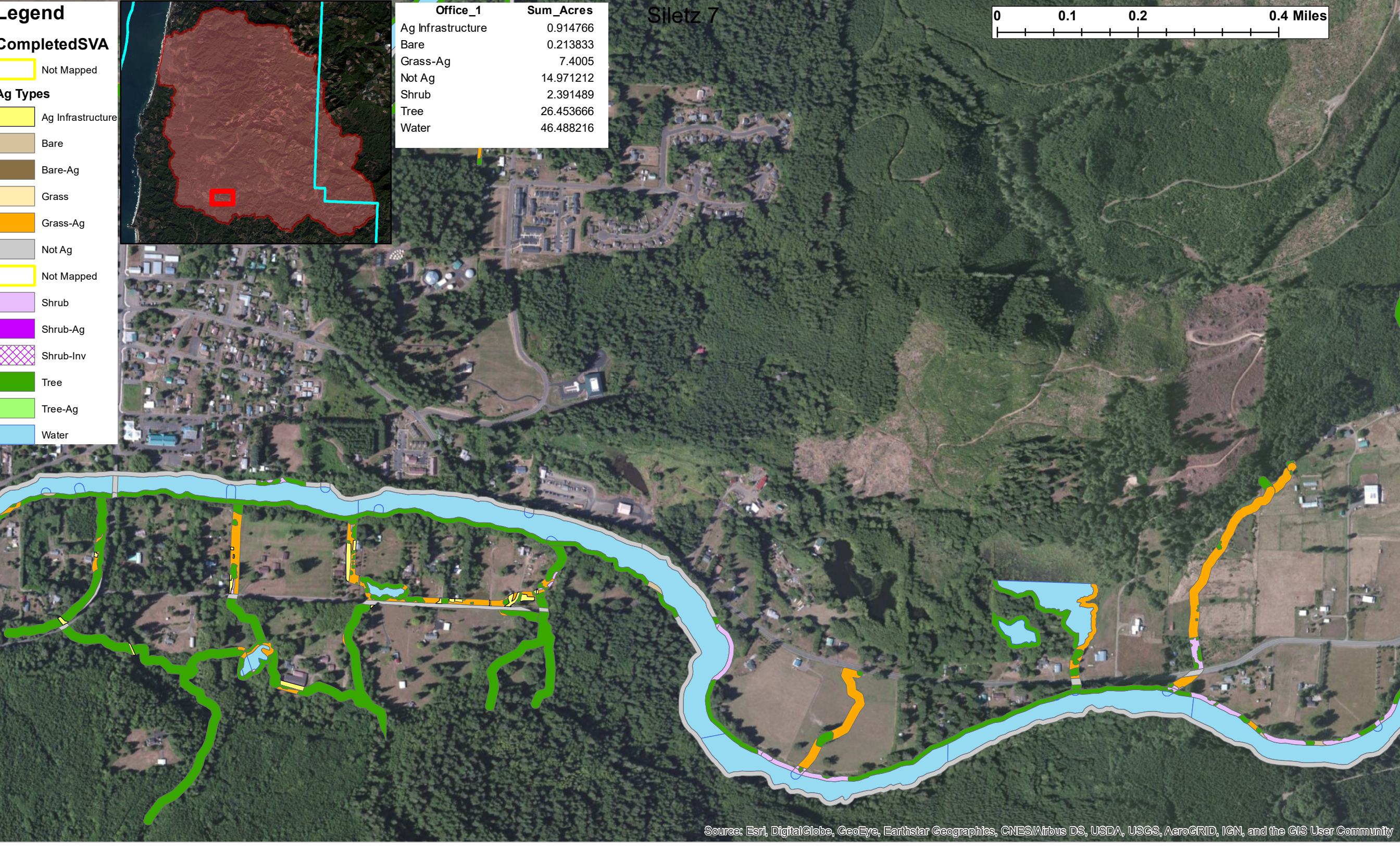
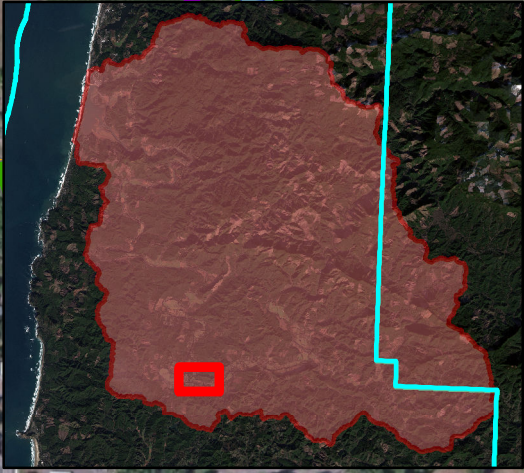
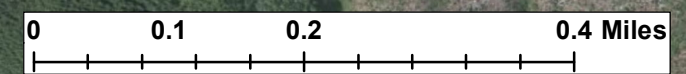
# Legend

## CompletedSVA

- Not Mapped
- Ag Infrastructure
- Bare
- Bare-Ag
- Grass
- Grass-Ag
- Not Ag
- Not Mapped
- Shrub
- Shrub-Ag
- Shrub-Inv
- Tree
- Tree-Ag
- Water

Office_1	Sum_Acres
Ag Infrastructure	0.914766
Bare	0.213833
Grass-Ag	7.4005
Not Ag	14.971212
Shrub	2.391489
Tree	26.453666
Water	46.488216

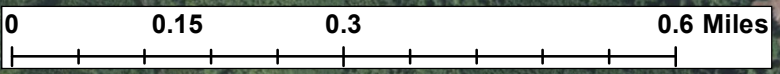
# Siletz 7



# Legend

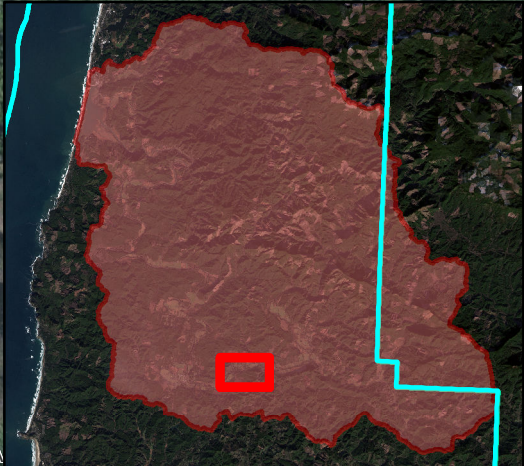
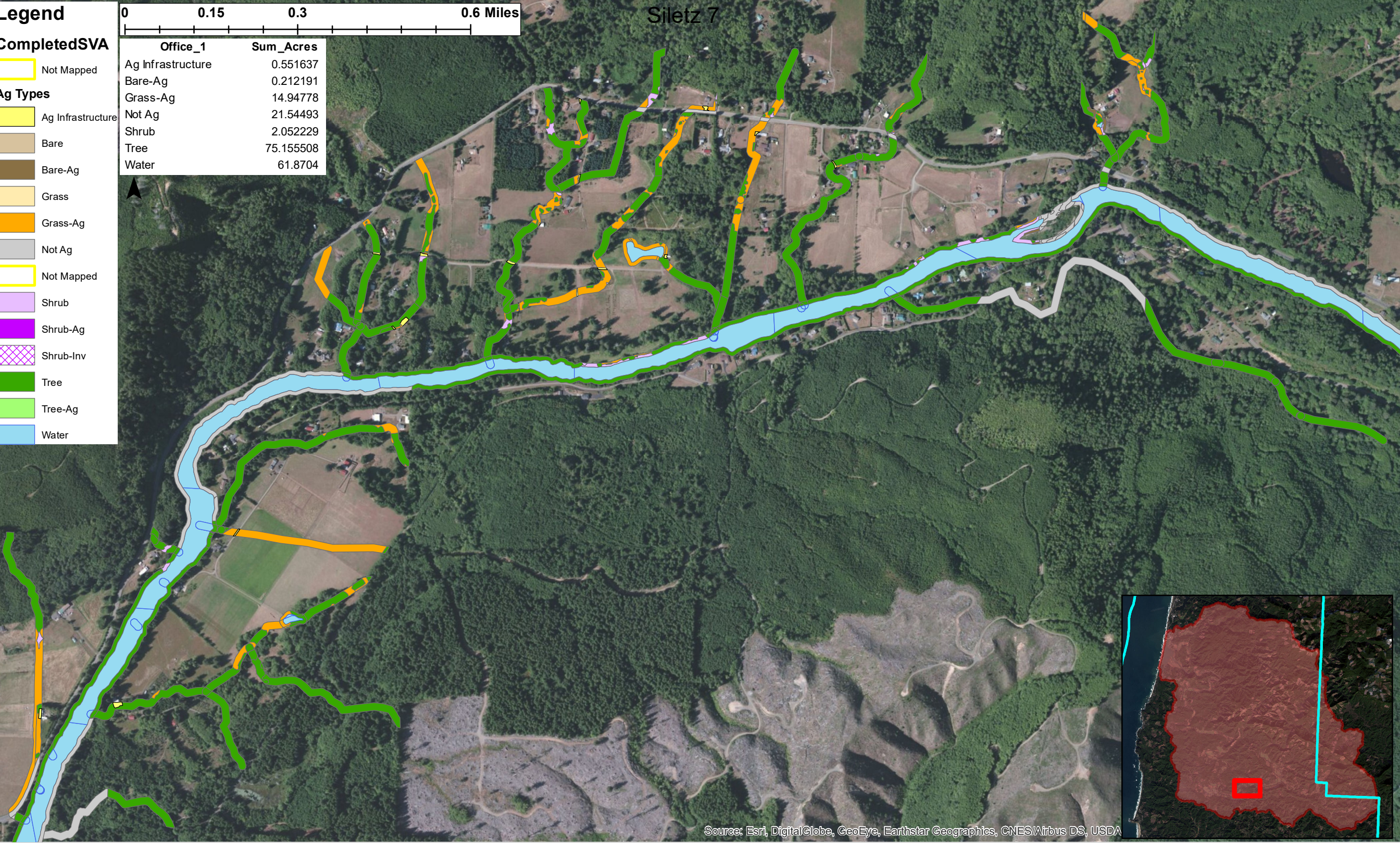
## Completed SVA

- Not Mapped
- Ag Infrastructure
- Bare
- Bare-Ag
- Grass
- Grass-Ag
- Not Ag
- Not Mapped
- Shrub
- Shrub-Ag
- Shrub-Inv
- Tree
- Tree-Ag
- Water



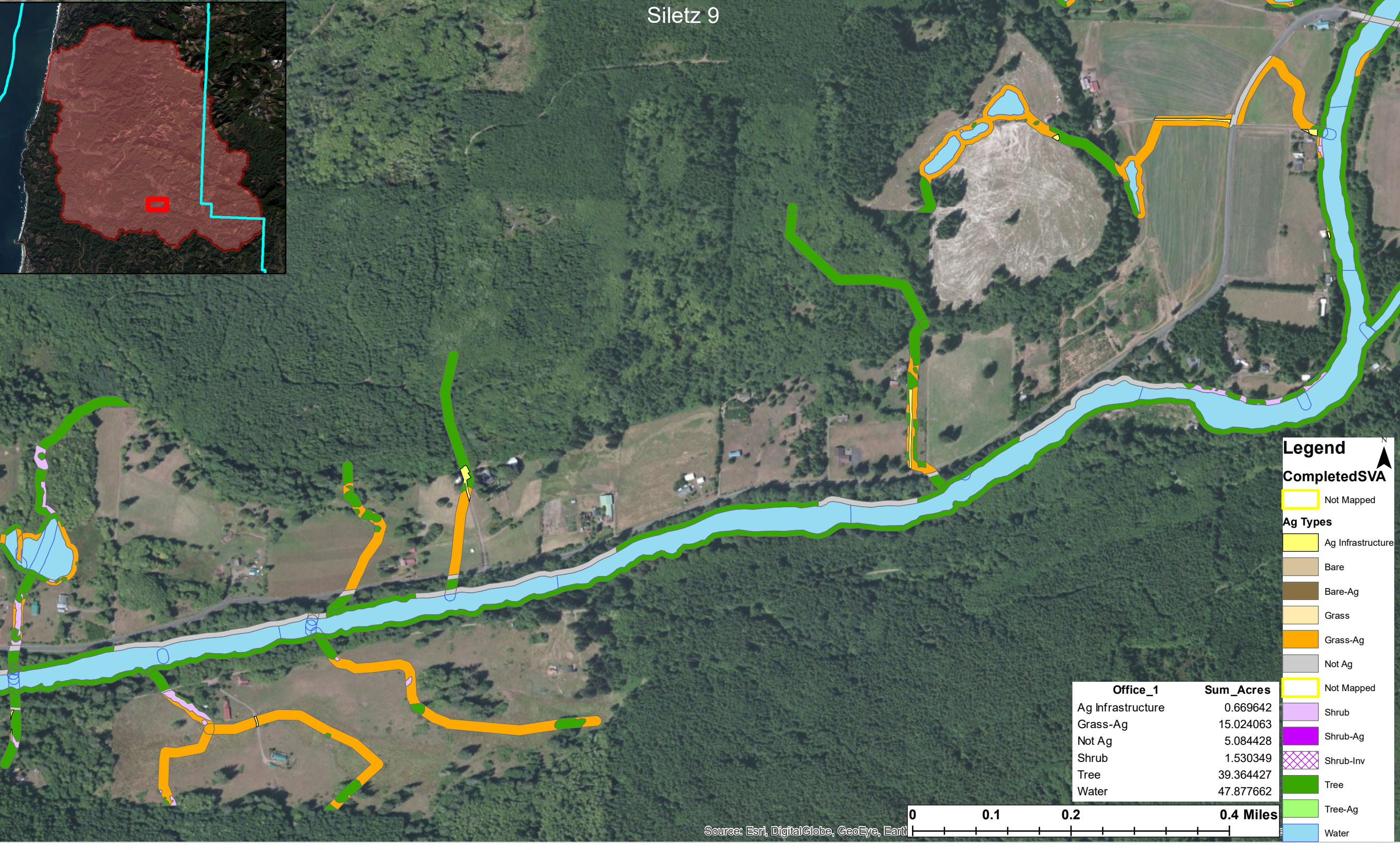
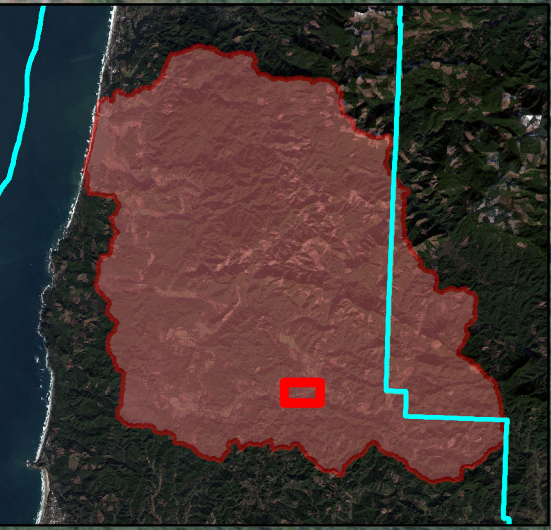
Siletz 7

Office_1	Sum_Acres
Ag Infrastructure	0.551637
Bare-Ag	0.212191
Grass-Ag	14.94778
Not Ag	21.54493
Shrub	2.052229
Tree	75.155508
Water	61.8704





# Siletz 9



**Legend**

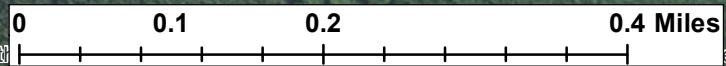
**CompletedSVA**

- Not Mapped

**Ag Types**

- Ag Infrastructure
- Bare
- Bare-Ag
- Grass
- Grass-Ag
- Not Ag
- Not Mapped
- Shrub
- Shrub-Ag
- Shrub-Inv
- Tree
- Tree-Ag
- Water

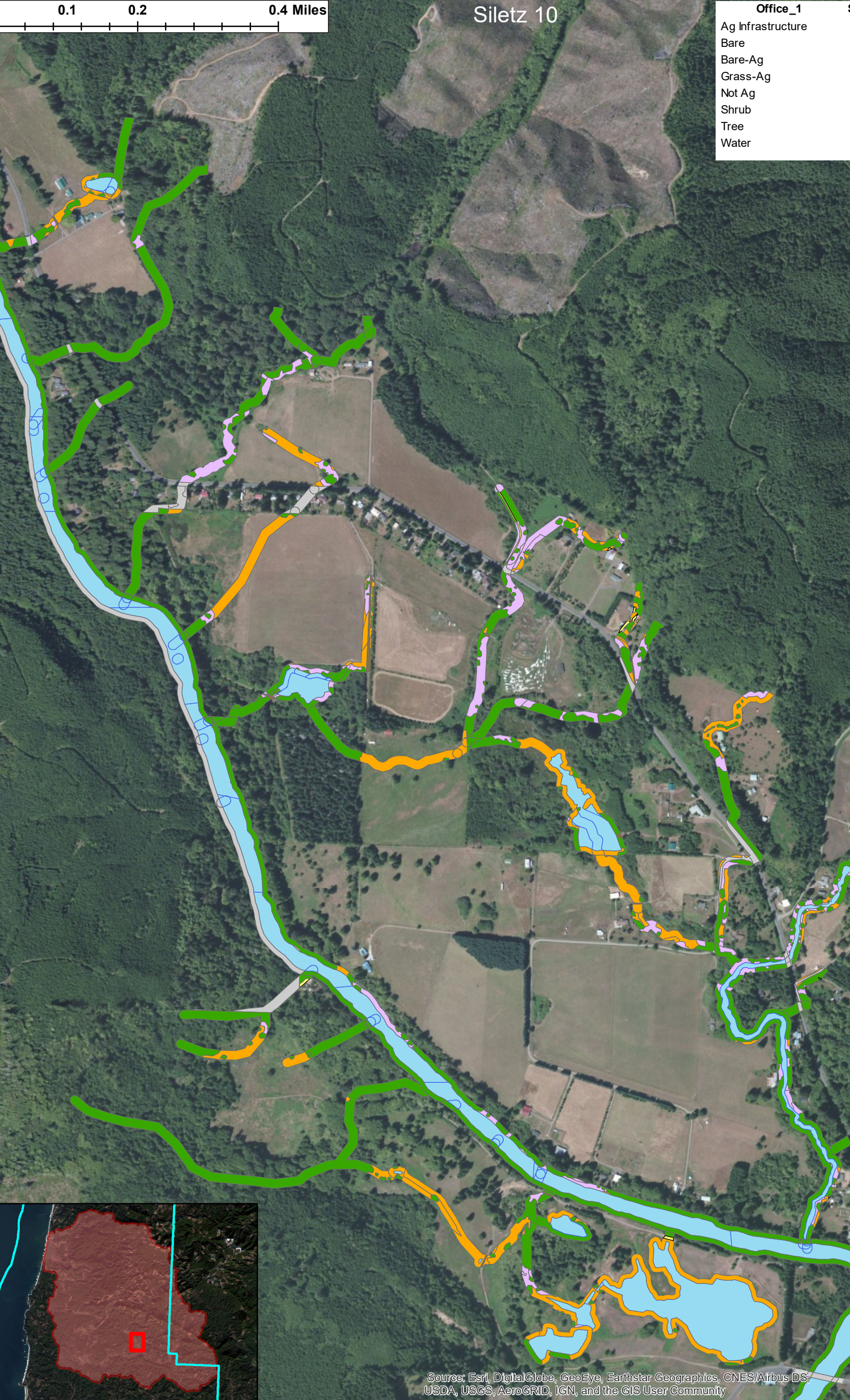
Office_1	Sum_Acres
Ag Infrastructure	0.669642
Grass-Ag	15.024063
Not Ag	5.084428
Shrub	1.530349
Tree	39.364427
Water	47.877662



0.1 0.2 0.4 Miles

# Siletz 10

- Office\_1
- Ag Infrastructure
  - Bare
  - Bare-Ag
  - Grass-Ag
  - Not Ag
  - Shrub
  - Tree
  - Water



0.1 0.2 0.4 Miles

# Siletz 11

- Office\_1
- Ag Infrastructure
  - Bare
  - Bare-Ag
  - Grass-Ag
  - Not Ag
  - Shrub
  - Tree
  - Water

