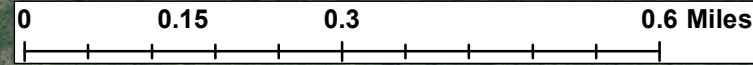


Rock Creek 1



Office_1	Sum_Acres
Ag Infrastructure	0.075234
Bare	0.081908
Grass-Ag	8.345381
Not Ag	18.449258
Shrub	5.873218
Tree	65.921168
Water	27.442947

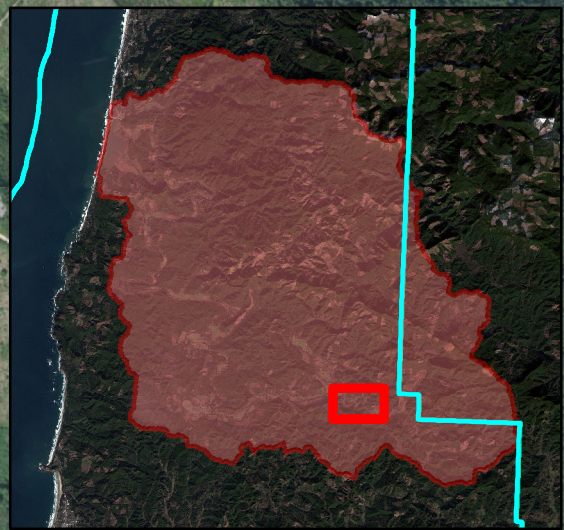
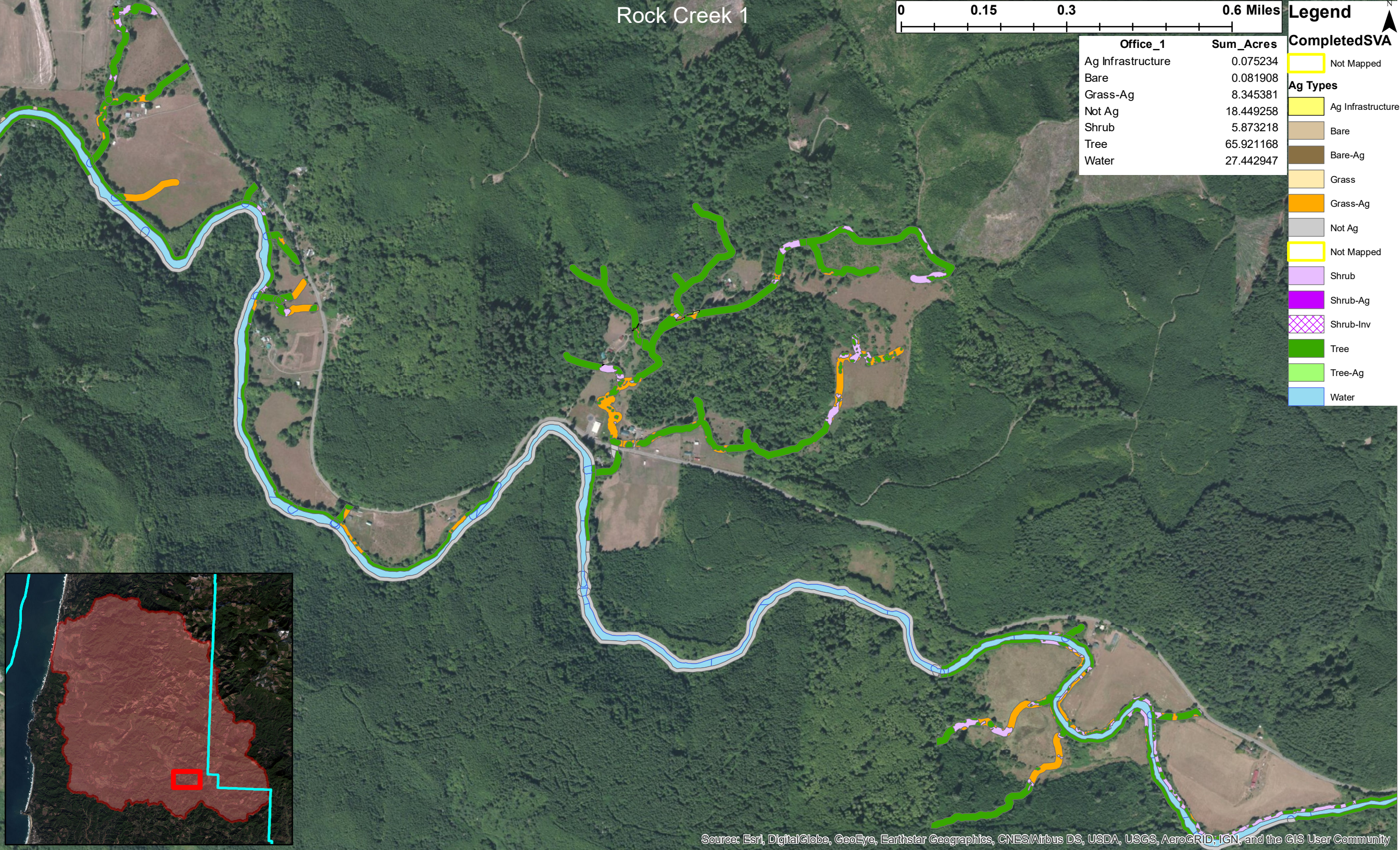
Legend

CompletedSVA

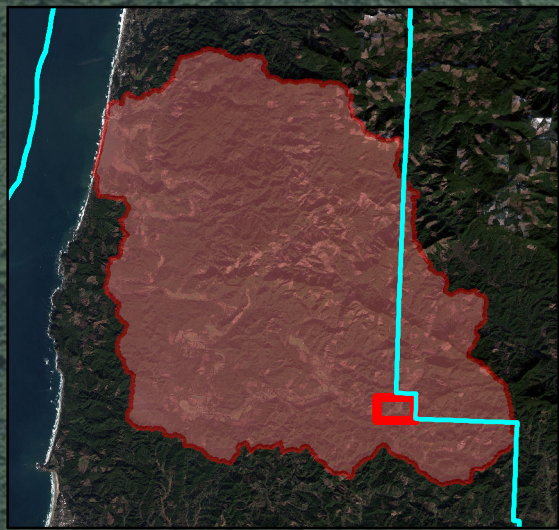
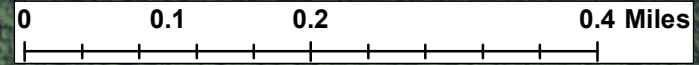
- Not Mapped

Ag Types

- Ag Infrastructure
- Bare
- Bare-Ag
- Grass
- Grass-Ag
- Not Ag
- Not Mapped
- Shrub
- Shrub-Ag
- Shrub-Inv
- Tree
- Tree-Ag
- Water



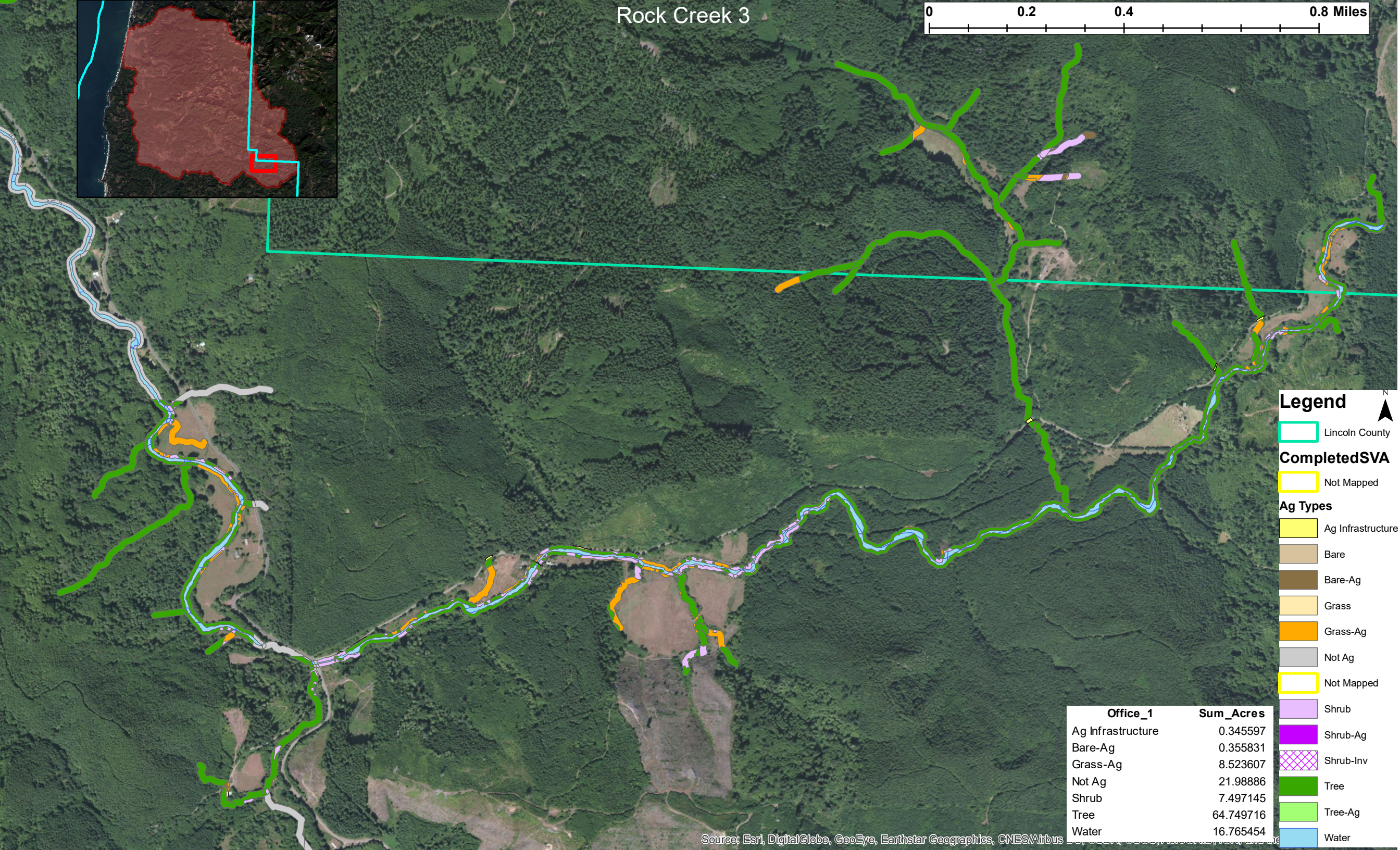
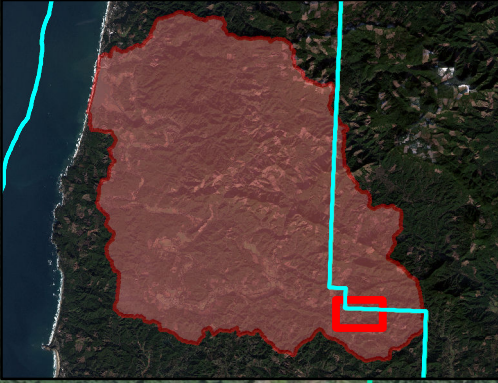
Rock Creek 2



- Completed SVA**
- Not Mapped
- Ag Types**
- Ag Infrastructure
 - Bare
 - Bare-Ag
 - Grass
 - Grass-Ag
 - Not Ag
 - Not Mapped
 - Shrub
 - Shrub-Ag
 - Shrub-Inv
 - Tree
 - Tree-Ag
 - Water

Office_1	Sum_Acres
Ag Infrastructure	0.053543
Bare	0.007894
Bare-Ag	0.059388
Grass-Ag	8.82469
Not Ag	9.831224
Shrub	2.935417
Shrub-Ag	0.003122
Tree	20.436515
Water	15.469548

Rock Creek 3



Legend

Lincoln County

CompletedSVA

Not Mapped

Ag Types

Ag Infrastructure

Bare

Bare-Ag

Grass

Grass-Ag

Not Ag

Not Mapped

Shrub

Shrub-Ag

Shrub-Inv

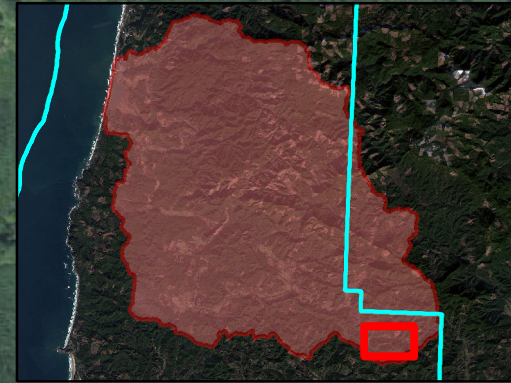
Tree

Tree-Ag

Water

Office_1	Sum_Acres
Ag Infrastructure	0.345597
Bare-Ag	0.355831
Grass-Ag	8.523607
Not Ag	21.98886
Shrub	7.497145
Tree	64.749716
Water	16.765454

Rock Creek 4



Legend

CompletedSVA

Not Mapped

Ag Types

Ag Infrastructure

Bare

Bare-Ag

Grass

Grass-Ag

Not Ag

Not Mapped

Shrub

Shrub-Ag

Shrub-Inv

Tree

Tree-Ag

Water

Office_1	Sum_Acres
Ag Infrastructure	0.069311
Bare-Ag	0.054136
Grass-Ag	6.90284
Not Ag	38.802049
Shrub	4.310486
Tree	15.561337
Water	5.508481



Source: Esri, DigitalGlobe, GeoEye, Earthstar (United States), CNES/Airbus DS, USDA, AeroGRID, IGN, SIA, USGS Earth Resource