

# Lincoln Soil And Water Conservation District

FY 2018 -19 Annual Report

*64 years of service*



## CONTENTS

*Year in Review: FY 2018-19*  
Page 01

*2018-19 Financial Statement*  
Page 02

*Water Quality and Watershed  
Restoration Programs*  
Pages 03 - 05

*Invasive Species Control  
Program*  
Page 06

*Mid Coast Monitoring Project*  
Pages 07 - 08

*Board of Directors and Staff*  
Page 09

*Partnerships*  
Page 10



## *Year in Review: FY 2018-19*

The 2018-19 Fiscal Year (FY) was a year of re-structuring and re-building at Lincoln SWCD (LSWCD). LSWCD runs three primary programs that carry out our core mission to conserve natural resources while serving the diverse needs of all Lincoln County's residents: 1) The Water Quality and Watersheds Restoration Program, 2) the MidCoast Monitoring Project and 3) The Invasive Species Control Program. These include 5 habitat improvement and restoration projects, 4 events for public outreach and engagement, and 6 water quality, salmonid population, and habitat monitoring projects. Additionally, LSWCD has undergone changes in general operations following additions, departures to its staff and Board of Directors and an office move. In September 2018, LSWCD moved its physical office to a new location on 411 NE Avery St. Ste B, in Newport. All members of the public are welcome to visit us in person at our new location. We look forward to another year of serving stakeholders in Lincoln County.

## Lincoln SWCD

**Physical:**  
411 NE Avery St. Ste B  
Newport, OR 97365

**Mailing:**  
PO Box 742  
South Beach, OR 97366

(541) 265-2631

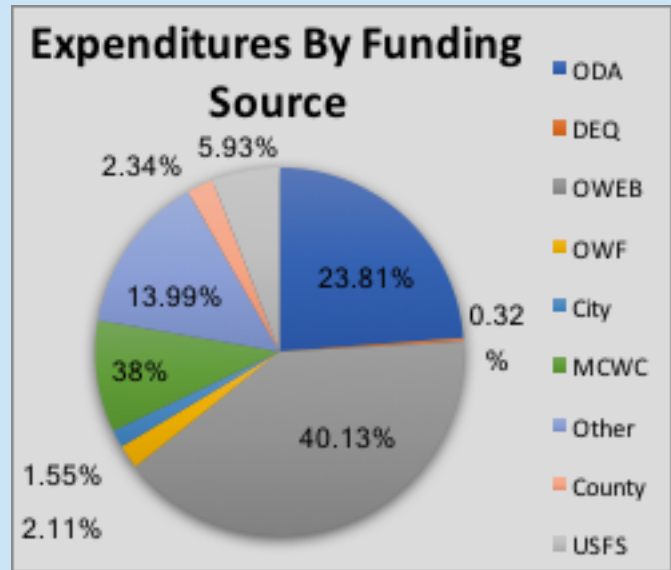
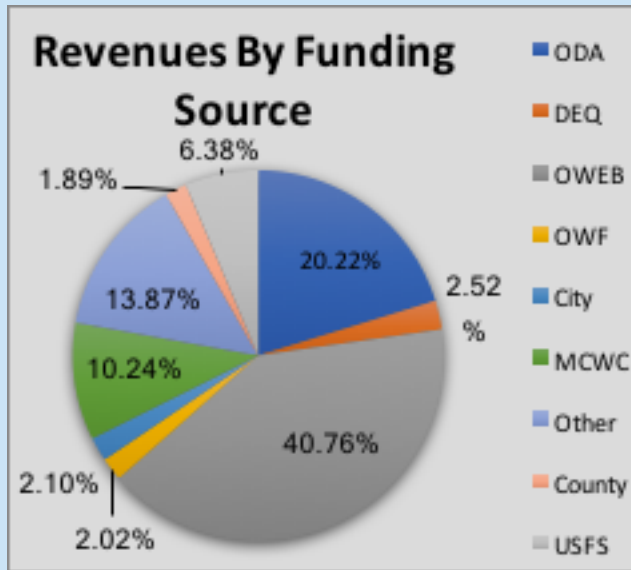
[info@lincolnswcd.org](mailto:info@lincolnswcd.org)

[www.lincolnswcd.org](http://www.lincolnswcd.org)

# 2018 - 2019 FINANCIAL STATEMENT

## All Funds Statement of Revenues and Expenditures As of June 30, 2019

REVENUES:		EXPENDITURES:	
Grant Funds	\$ 353,952	Personal Services	\$ 241,144
Administrative Receipts	\$ 24,661	Material and Supplies	\$ 18,252
Rent Proceeds	\$ 8,688	Administration Expenses	\$ 24,661
Plant Sale Income	\$ 4,022	Office Rent	\$ 18,500
Other Receipts	\$ 4,604	Contract Services	\$ 30,537
Line of Credit	(\$ 7,077)	Utilities	\$ 4,152
		Travel	\$ 19,787
		Operating Expense	\$ 7,031
		Interest Expenses	\$ 1,338
<b>Total Revenues</b>	<b>\$ 388,850</b>	<b>Total Expenditures</b>	<b>\$ 365,402</b>
<b>Fund Balance as of 7/01/18</b>	<b>\$ 15,311</b>	<b>Fund Balance as of 6/30/19</b>	<b>\$ 38,759</b>



ODA - OR Dept of Agriculture  
 DEQ - OR Dept of Environmental Quality  
 OWEB - OR Watershed Enhance Board  
 OWF - Oregon Wildlife Foundation  
 City - City of Newport, Oregon  
 MCWC - MidCoast Watersheds Council  
 County - Lincoln County Oregon  
 USFS - US Forest Service

Lincoln SWCD was established by statute under the administrative oversight of the Natural Resources Division of the Department of Agriculture. The District is a subdivision of State Government. The District is exempt from Oregon State budget laws because it is organized under ORS chapter 568 as a soil and water conservation district that does not levy an ad valorem tax. The Board of Directors prepares a cash basis budget for managerial purposes. The District is a municipal corporation exempt from federal and state income taxes  
 \*\*\*An outside accounting firm performs an official audit review annually of all District funds. The final approved audit review report is available at the District office

# WATER QUALITY AND WATERSHED RESTORATION PROGRAMS

*Part of the aim of the LSWCD Water Quality & Restoration Program is to provide the community with place-based information, technical, and financial assistance to help protect water and soil resources in the County's rural and urban areas. The District does this through educational workshops, informational events and an annual native plant sale.*

## RESTORATION WORK 2018 - 2019 HIGHLIGHTS



**4th of July Creek Habitat Restoration:** Partnered with **ODFW** to place **120 logs** in **1.2 miles** of stream. This work utilized **OWEB salvage log funds** in coordination with **MidCoast Watersheds Council** - LSWCD will conduct planting and site maintenance into 2022.

**Erosion control on Big Elk Creek Property:** Partnered with **NRCS** to re-design and install new gutter system on large cattle barn.

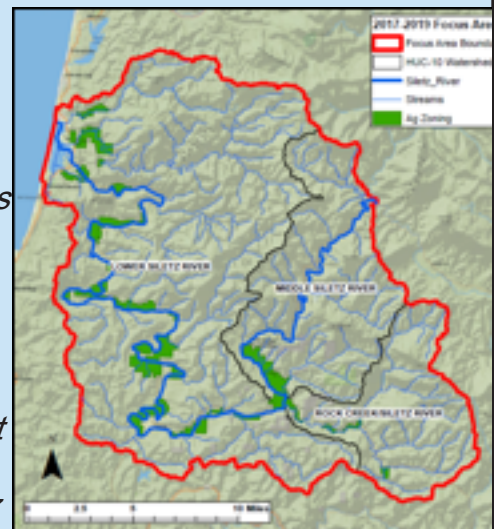
**Native Plant Establishment** at 2 properties in the Siletz and Yachats Basins



## LSWCD 2017-2019 FOCUS AREA

*Every biennium the District chooses an area to focus its efforts to improve water quality, soil productivity, and habitat. During that two-year period the WTS works with landowners to develop projects and also works closely with partner organizations on monitoring.*

*In April 2019, LSWCD was awarded OWEB stakeholder engagement funding to conduct landowner outreach and engagement throughout the Siletz Focus Area during **2020-21**.*



# WATER QUALITY AND WATERSHED RESTORATION PROGRAMS

## WATER QUALITY MONITORING 2018 - 2019 HIGHLIGHTS



**ODA Yachats temperature monitoring:** *In collaboration with OR Dept. of Agriculture (ODA) and OR Dept. of Environmental Quality (DEQ), LSWCD continued the “Long-Term Stream Temperature and Streamside Vegetation Monitoring Project (DEQ Yachats), which involves maintaining continuous temperature loggers at 3 locations along the Yachats River from May to November. This is the second year of a 20-year temperature monitoring effort by the ODA.*

**Siletz TMDL monitoring:** *Throughout the 2018-19 fiscal year, Lincoln SWCD worked with OR DEQ to collect monthly water quality data along the Siletz River. District staff collected data at 11-13 locations along more than 39 river miles of the Siletz, and document continuous dissolved oxygen; temperature; stream flow; and Nitrates in the water column. This project aims to identify nutrient inputs along the waterway, inform future non-point source water quality improvement projects for LSWCD, and supply data for OR DEQ’s Water Quality Assessment on the Siletz River.*

**City of Newport Stormwater:** *LSWCD continued collaboration with the City of Newport in sampling water at different open and closed stormwater sources. The goal for this project is to assist decision makers and planners to identify locations of infrastructure aging/failure, and build a baseline dataset that is required for environmental health improvements. Sampling has continued through 2019.*

**Domestic Well Safety Program:** *In partnership with Lincoln County Department of Environmental Health, LSWCD sampled wells on rural properties where landowners were interested in learning the status of the quality - arsenic, nitrate, and coliforms - of their drinking water.*

### Coliform bacteria in well water: What you should know

Coliform bacteria are part of a broad group of bacteria found in soil, water and vegetation. Coliforms are also found in the intestines of humans and other warm-blooded animals. Coliforms can enter your well through groundwater, surface water run-off, contact or broken well parts, poor construction, and leaking supply tanks. Coliforms in your well water can mean there are disease-causing organisms such as E. coli. E. coli is a sign of fecal matter and can cause health problems.

#### Total coliform, fecal coliform and E. coli



#### Coliform bacteria and your health

If total coliforms or fecal coliforms are in your well water, you may have diarrhea, cramps, nausea, headaches or other symptoms. Infants, young children and people with compromised immune systems are at a higher risk.

#### Coliform bacteria and your well water

Testing for coliforms is the most common way to know if your drinking water is contaminated and unsafe to drink. Contact an accredited laboratory for specific instructions on how to collect, store and send the sample. The test will cost between \$25-\$40. To find accredited labs in Oregon, visit [www.lswcd.org/coliform](http://www.lswcd.org/coliform).

If your water has a positive test for total coliform, it should also be tested for E. coli. If positive for E. coli, you should switch to bottled water or another source of safe drinking water and seek treatment options.

#### Interpreting your coliform bacteria results

Coliforms result	Water use	Recommendation
Present	SAFE for all uses	The water is safe to use.
Coliform and/or E. coli	NOT SAFE for drinking, food preparation, treating teeth and oral care.	Do not drink water before using or use bottled water for other safe drinking water uses. Expensive changes to help them avoid swallowing water while bathing, brushing teeth, etc.
Test for other domestic uses	SAFE for other domestic uses and irrigation purposes.	Inspect your well head and well parts for repairs and contact your local drinking water department for treatment advice.

This document can be translated upon request in an alternate format for individuals with disabilities or in a language other than English for people with limited English skills. To request the publication in another format or language, contact the Domestic Well Safety Program at 507-675-5077 or 711 for TTY.



Public Health Department  
Environmental Health



# WATER QUALITY AND WATERSHED RESTORATION PROGRAMS

## OUTREACH AND ENGAGEMENT 2018 - 2019 HIGHLIGHTS



**671** Lincoln County landowners provided with brochures, fact sheets, or mailings

**4** public events or workshops with 162 total attendees

**72** Lincoln County landowners provided with one-on-one technical assistance

**24** total site visits



**68** partner events and meetings attended by staff

**11** events hosted for partners

**54** attendees at District-hosted partnership events

### MID COAST WATER PLANNING PARTNERSHIP

*The most significant partnership opportunity for the District in 2018 was its participation in this regional pilot partnership for water planning. Former WTS, Audrey Sweet, and former Director-At-Large, Dr. Wayne Hoffman, were integral to this program's initial development, structure, growth, and purpose in the MidCoast Region. Sweet was an active member and organizer of the "Self Supplied User" Workgroup (primarily looking at the needs of domestic well owner/operators as well as agricultural producers), and Dr. Hoffman chaired the "Instream Ecology" workgroup, bringing not only knowledge and first-hand experience with conservation needs in the region's waterways, but also bringing respect to this new program with his years of experience and trust in the MidCoast's conservation community.*

# INVASIVE SPECIES PROGRAM

*The Invasive Species Control Program (ISCP) coordinates available State and Federal resources to address the highest priorities for eradication of invasive plants including planning to address future introductions. This program develops and carries out control plans, monitors Lincoln County natural resources and provides education and outreach materials for Lincoln County residents. The ISCP works with many partners throughout Lincoln County, the State of Oregon, and abroad to facilitate prevention and successful control of invasive species across many private and public landowners.*

## ISCP 2018 - 2019 HIGHLIGHTS



*In April 2019, LSWCD obtained funding through the Asea Stewardship Group to conduct noxious weed mapping and eradication for three major invasive species – knotweed, yellow flag iris, and policemen’s helmet – in the Asea Basin. The work for this project is planned to begin January 2020.*

*In June 2019, LSWCD partnered with Oregon Parks and Recreation in mapping and deadheading yellow flag iris in Beaver Creek State Park. This work is intended to continue Autumn 2020.*



**Yellow Flag Iris**  
(*Iris pseudacorus*)

Photo credit: wikipedia commons



**Japanese knotweed**  
(*Reynoutria japonica*)

Photo credit: wikipedia commons



**Policemen’s helmet**  
(*Impatiens glandulifera*)

Photo credit: wikipedia commons

# MID COAST MONITORING PROJECT

*The Mid Coast Monitoring Project (MCMP) has two main monitoring objectives:*

- 1) provide baseline, pre- and post-project data on aquatic habitats in the Mid Coast region, and*
- 2) provide information on the long-term abundances of salmonid populations on the local scale in the Mid Coast region by complementing Oregon Department of Fish and Wildlife (ODFW) efforts to track spawning salmonid population dynamics.*

## MCMP 2018 - 2019 HIGHLIGHTS



In 18-19 MCMP conducted **Aquatic Habit Inventories (AQI)** at **4 locations** for a total of **13.93 stream miles** in coordination with OR Dept. of Fish and Wildlife (ODFW), MCWC, Confederated Tribes of Siletz Indians, and the Bureau of Land Management.

*Cedar Creek in the Siletz Basin, 9.72 miles*

*Rock Creek in the Siletz Basin, 2.52 miles*

*Little Rock Creek in the Siletz Basin, 1.90 miles*

*Record Creek in the Alsea Basin, 0.94 miles*

**TOTAL,**

**Twenty Years of Monitoring: Mid Coast Monitoring Project** was written by MCMP surveyors in collaboration with ODFW, and describes trends of spawning and habitat data collected by MCM since 1999. In total:

Since 1999 MCMP has completed AQI in **132 stream locations** across **8 Mid Coast Basins**

Spawning Ground Surveys conducted in **124 reaches** in **73 streams** across **8 Mid Coast Basins**. Of these, MCMP has maintained long-term datasets of spawning Chinook, coho, chum, and steelhead in **17 streams**.

**\*\*The 20-year report is available upon request.**

**Spawning Ground Surveys** during 2018-19 were conducted for Chinook, coho, chum, steelhead, and lamprey. Surveys are conducted on weekly - semi-weekly rotations during August-October (Early Chinook), October - January (Chinook, coho, chum), and February - May (steelhead, lamprey).

**Early component Chinook surveys, 5 reaches** in mainstem Siletz and Alsea Rivers totaling **33.3 river miles**

**Coho, chum, and Fall Chinook surveys, 17 survey sites** totaling **14.99 stream miles** in **6 basins**

**Steelhead surveys, 18 survey sites** totaling **23.78 stream miles** in **5 basins**.



# LSWCD BOARD OF DIRECTORS

*2018-2019 brought some changes to the LSWCD Board of Directors. The District was re-drawn and now consists of three zones instead of five. In October 2018, Long time Director and Vice Chair Wayne Hoffman stepped down to move across the USA. In 2019, Jim Stafford resumed role of Chair, and Alan Fujishin was elected to Zone 2.*

## **Jim Stafford**

Chair  
Zone 1

## **Tom Wiley**

Vice Chair  
Zone 3

## **Alan Fujishin**

Director  
Zone 2

## **Mark Saelens**

Secretary  
At Large

## **Wayne DeMoray**

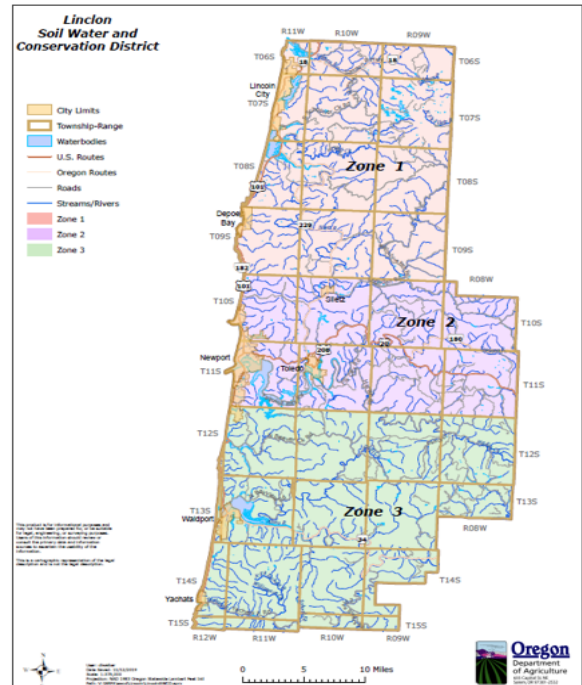
Treasurer  
At Large

## **Sterling Grant**

Associate Director

## **Terrie Grant**

Associate Director



# LSWCD STAFF

*2018-2019 was a transitional year of staff additions and departures at LSWCD. Audrey Sweet, Watershed Technical Specialist, and Aaron Duzik, Invasive Species Specialist, left the District in August and November, respectively. Josh Seekatz joined LSWCD in August through May. Emily-Bell joined the District in October 2018.*

**Emily- Bell Dinan**, Conservation Program Coordinato

**Aaron Duzik**, Invasive Species Specialist

**Tanya Graham**, Fiscal Provider

**Jen Hayduk**, Biosurveyor/Conservation Program Assistant

**Kelsey Miller**, Biosurveyor

**Josh Seekatz**, Watershed Technical Assistant

**Mark Stone**, Biosurveyor

**Zach Wilson**, Lead Field Technician

**Casey Baldwin**, Field Technician

**Danielle Jackson**, AQI Intern/Biosurveyor



# PARTNERSHIPS

## 64 years of Directors and Associate Directors - Thank you!

Arden Howard	Gene Cooper	Ken Zeek	Quinn Murk	Sterling Grant
Bella Ross	Hap Ayers	Kenneth O'Dell	Ray McDuffee	Terri Grant
Bob Deskins	HJ Kasner	Lester Hall	Rennie Ferris	Terry Keady
Bob Nichol	Irvin Hobart	Lloyd Hansler	Rick Priest	Tim Miller
Brown Wakefield	James Kent	Mark Saelens	Rob Jacobsen	Tony Pearson
Calvert Jones	Jeff Jackets	MB Noble	Robert Gribble	Wayne DeMoray
David Compton	Jerry Kosydar	Mel Rigdon	Robert vanCre- veld	Wayne Hoffman
Don Kessi	Jim Dunlap	Ned Lentz	Rufus Cate	Wiley Gibson
Don Shaffer	Jim Holt	Norma McMillin	Russ Glascock	Willow Kennedy
Elmer Patterson	Jim Stafford	OS Knox	Ryan Gassner	Alan Fujishin
John Wit	Jodie Skeels	Paul Gerber	Shirley Zeek	Tom Wiley
Ken O'Dell	Joe Steenkolk	Phillis Hawkins		

## District Partners in Conservation

Alsea Watershed Council	Oregon Department of Environmental Quality
Alsea Stewardship Group	Oregon Department of Fish and Wildlife
Benton SWCD	Oregon Department of Human Services
Bio-Surveys, LLC	Oregon Association of Conservation Districts
Bureau of Land Management	Plum Creek Foundation
Cascade Pacific RC&D	Oregon Department of State Lands
City of Lincoln City	Oregon League of Conservation Voters
City of Newport	OSU Extension
City of Siletz	OSU Sea Grant
City of Toledo	Oregon State Parks and Recreation
City of Yachats	Oregon State Weed Board
Confederated Tribes of the Siletz Indians	Oregon Watershed Enhancement Board
Dahl Disposal Inc.	Salmon Drift Creek Watershed Council
Devils Lake Water Improvement District	Siletz Charitable Community Foundation
Eddyville Charter High School	Siletz Watershed Council
Hatfield Marine Science Center	Siuslaw Soil and Water Conservation District
Lincoln County Commissioners	Siuslaw Watershed Council
Lincoln County Public Works	Starker Forest Incorporated
Lincoln County Solid Waste	Surfrider Foundation
Marys River Watershed Council	USDA—Natural Resources Conservation Service
MidCoast Watersheds Council	USFS—Siuslaw National Forest
Mid Coast Cooperative Weed Management Area	Wetlands Conservancy
Oregon Coast Aquarium	Western Invasives Network
OR Conservation Employees Association Network	Yaquina Watershed Council
Oregon Department of Agriculture	