

February 11, 2021

Lincoln SWCD 2019/2020 Year in Review

Jen Hayduk, Conservation Programs Manager
Lincoln Soil & Water Conservation District



Discussion Map:



19-20 Financial Report

Year in summary

Basin by Basin 2019-20 Accomplishments & Challenges , with an emphasis on Siletz

2021-23 Upcoming Work

Questions



FY 2019-20 Financial Audit

LINCOLN SOIL AND WATER CONSERVATION DISTRICT

Table of Contents
June 30, 2020

| | <u>Page</u> |
|--|-------------|
| INDEPENDENT ACCOUNTANT'S REVIEW REPORT | 3 - 4 |
| BASIC FINANCIAL STATEMENTS: | |
| Government-wide financial statements: | |
| Statement of net position | 6 |
| Statement of activities | 7 |
| Fund financial statements: | |
| Balance sheet -- governmental funds | 8 |
| Statement of revenues, expenditures and changes in fund balances -- governmental funds | 9 |
| Reconciliation of the statement of revenues, expenditures and changes in fund balances to the statement of activities | 10 |
| Notes to the financial statements | 12 - 17 |
| SUPPLEMENTAL INFORMATION: | |
| Combining statement of actual expenditures | 19 |
| Statement of revenues, expenditures and changes in fund balances -- budget and actual: | |
| Governmental funds: | |
| General fund | 20 |
| Conservation projects fund | 21 |
| MANAGEMENT REPRESENTATION OF FISCAL AFFAIRS REQUIRED BY OREGON REGULATION | 23 |

The FY 19-20 audit and financial report is available

Email jen@lincolnswcd.org or shannon@lincolnswcd.org to receive a copy



2019 - 2020 at Lincoln SWCD, briefly



The Lincoln Soil & Water Conservation District's 2019
Native Plant Sale
Saturday December 7th 9:00 to 3:00
& Sunday December 8th 9:00 to 1:00
Located at the Lincoln County Fair Grounds 4H Building
633 NE 3rd Street, Newport, Oregon

Pre-Sale Ends November 1st!
Call or email to take advantage of wholesale prices today!

Plant Selection, order forms, and additional info all available online at www.LincolnSWCD.org/Events

Payments accepted by cash or check only, checks can be made out to Lincoln SWCD.
Office hours M-F 8 am to 4pm, please make arrangements to stop by!

Questions? Get in touch!
info@LincolnSWCD.org
or call (541) 265-2631

Volunteers receive additional 10% discount off of pre-sale prices! Sign up to volunteer by emailing amy@LincolnSWCD.org

The mission of the Lincoln SWCD is to improve and conserve the quality of soil, water, and other natural resources related to agricultural, forested, private, urban and rural lands in Lincoln County by:

- *providing applicable information, education, and outreach*
- *providing technical assistance to implement conservation plans and projects*
- *providing an interface between state and federal agencies and private landowners*
 - *participating in local resource conservation policy development*



Siletz 2019-2021
Focus Area

| | Basin | | | | |
|--|---------------------------|--------|---------|------------------|---------|
| | Salmon/ Devils Lake | Siletz | Yaquina | Alsea/ Beaver | Yachats |
| <i>Monitoring</i> | | | | | |
| Mid Coast Monitoring Project 218-1035 | x | x | x | x | x |
| Siletz Water Quality Monitoring 218-1040 | | x | | | |
| OHA Turbidity Threshold Sampling | | x | | | |
| ODA Temperature Monitoring | | | | | x |
| City of Newport stormwater sampling | | | x | | |
| Lincoln County Domestic Well Testing | | x | x | | |
| <i>Watershed Restoration</i> | | | | | |
| Schooner Creek Riparian Restoration | | x | | | |
| 4th of July Creek Restoration | | x | | | |
| Sunshine Creek Riparian Restoration | | x | | | |
| Long Prairie Creek Riparian Restoration | | x | | | |
| Grant Creek Gutter Improvement | | | x | | |
| Cascade Pacific Mill/Slack Creek | | | x | | x |
| <i>Invasive Species Control</i> | | | | | |
| USFS Good Neighbor Agreement - Poole Thin | | | | x | |
| Alsea Steward Group Noxious Weed Control Project | | | | x | x |
| <i>Outreach and Engagement</i> | | | | | |
| Siletz Coho Business Plan Stakeholder Engagement | | x | | | |
| Yachats Best Management Practices DEQ 007-19 | | | | | x |
| Mid Coast Water Planning Partnership | x | x | x | x | x |

Overview: Projects by Basin

Salmonid spawning surveys across all basins

Re-boot of Invasive Species Program

Schedule of outreach activities on hold (COVID)



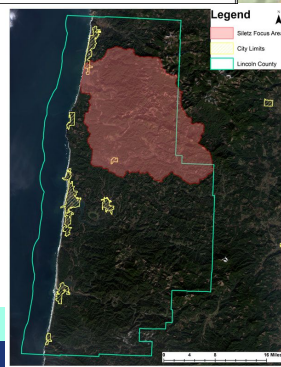
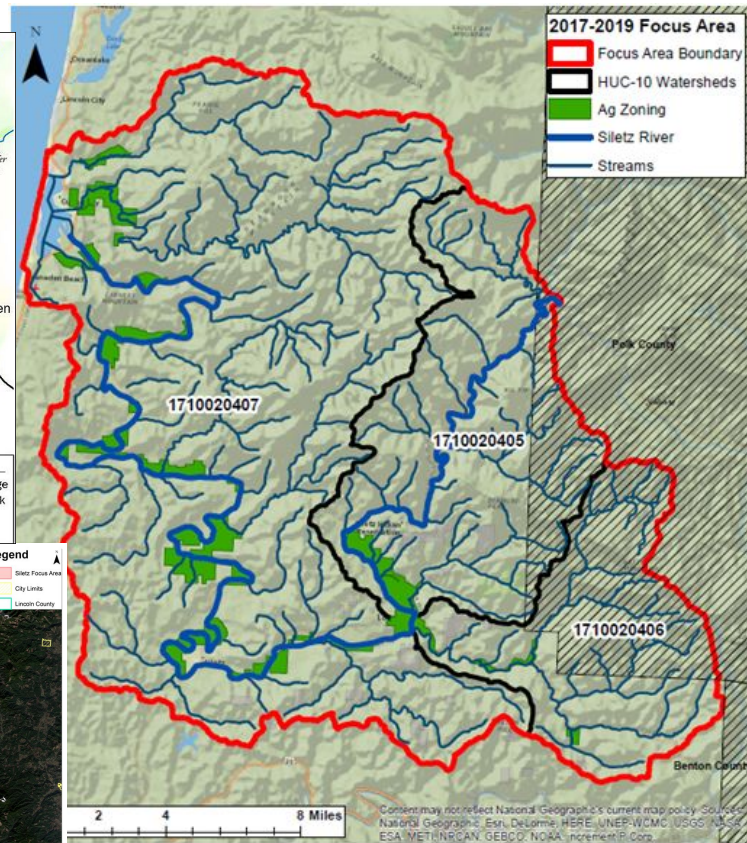
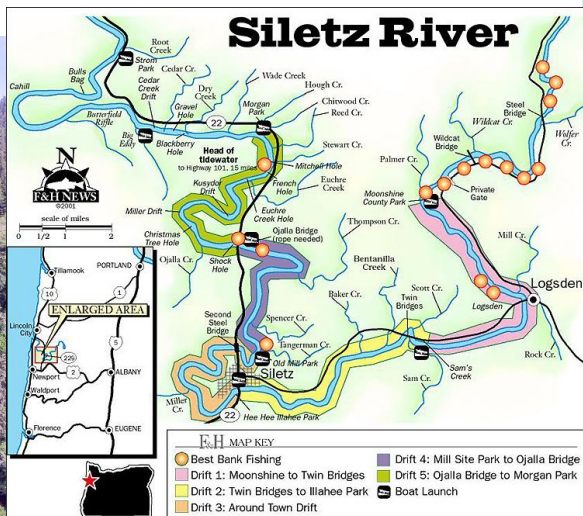
| | Basin | | | | |
|--|---------------------------|--------|---------|------------------|---------|
| | Salmon/ Devils Lake | Siletz | Yaquina | Alsea/ Beaver | Yachats |
| <i>Monitoring</i> | | | | | |
| Mid Coast Monitoring Project 218-1035 | x | x | x | x | x |
| Siletz Water Quality Monitoring 218-1040 | | x | | | |
| OHA Turbidity Threshold Sampling | | x | | | |
| ODA Temperature Monitoring | | | | | x |
| City of Newport stormwater sampling | | | x | | |
| Lincoln County Domestic Well Testing | | x | x | | |
| <i>Watershed Restoration</i> | | | | | |
| Schooner Creek Riparian Restoration | | x | | | |
| 4th of July Creek Restoration | | x | | | |
| Sunshine Creek Riparian Restoration | | x | | | |
| Long Prairie Creek Riparian Restoration | | x | | | |
| Grant Creek Gutter Improvement | | | x | | |
| Cascade Pacific Mill/Slack Creek | | | x | | x |
| <i>Invasive Species Control</i> | | | | | |
| USFS Good Neighbor Agreement - Poole Thin | | | | x | |
| Alsea Steward Group Noxious Weed Control Project | | | | x | x |
| <i>Outreach and Engagement</i> | | | | | |
| Siletz Coho Business Plan Stakeholder Engagement | | x | | | |
| Yachats Best Management Practices DEQ 007-19 | | | | | x |
| Mid Coast Water Planning Partnership | x | x | x | x | x |

Siletz Basin

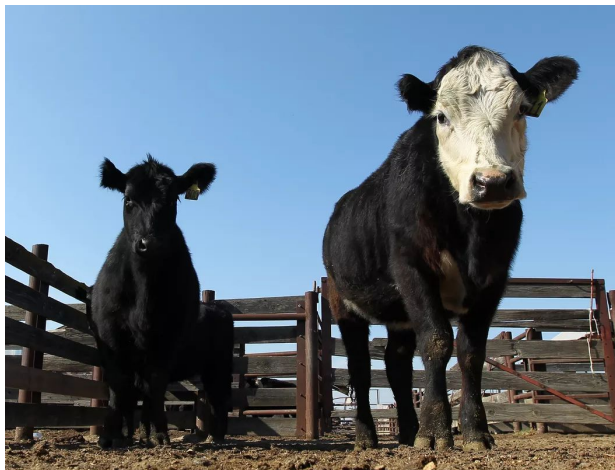
- Spawning surveys:
 - Drift Creek
 - Cedar Creek
 - Euchre Creek
 - Bear Creek
 - Mainstem
- Water quality monitoring and domestic well testing
- Riparian / stream restoration in 4 creeks
- Stakeholder engagement



Siletz Basin



Land Use in a 191,384 Acre Focus Area



4% (7,903 acres) Resource Zoned
Agricultural - Primarily in pasture
land for beef cattle and hay



82% of Focus Area Zoned for Timber:
70% private industrial scale
10% individuals, small companies, USFS
~2% BLM, ODF, BIA, USFW, other



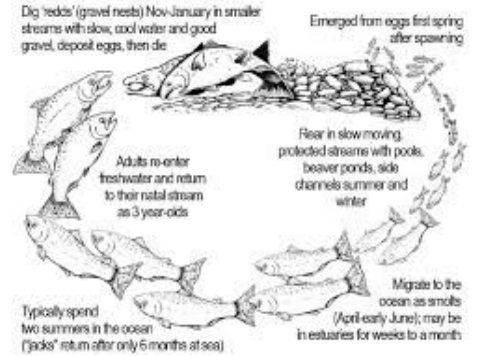
Focus Area Selection Criteria

Concurrent Planning



**Drinking Water Source:
Lincoln City, Newport,
Toledo, Siletz, Seal Rock**

Collaboration & Partnerships



Coho Business Plan

MID-COAST WATER
PLANNING PARTNERSHIP



State of Oregon
Department of
Environmental
Quality

Table 2: Primary Water Quality Parameters of Concern in Focus Area

| Primary Ag WQ Parameters of Concern 1. | | 2. Source of Information for WQ Concern | | | 3. Type of Project(s) Planned to Address WQ Concern(s) |
|--|---|---|-------------|---|---|
| | | TMDL | 303(d) List | Instream WQ or Land Condition Data (Describe) | |
| Stream Temperature | X | | X | Increased temperature impaired water (DEQ) | Water quality monitoring, riparian planting to increase shade |
| Bacteria | X | | X | E. coli impaired water (DEQ) | Manure storage facilities, fencing, and off-stream watering areas |
| Sediment | X | | X | Turbidity impaired waters (DEQ) and OHA Report | Restoration projects to stabilize stream banks to reduce erosion |
| Dissolved Oxygen | X | | X | D.O. impaired waters (DEQ) | Continued water quality monitoring to establish TMDLs |
| Nutrients (N & P) | X | | | Not listed, but nutrient runoff from ag land has been associated with eutrophication of surface water | Riparian plantings to slow surface runoff, capture sediment and sediment-bound nutrients, and take up nutrients |
| Pesticides or Toxics | X | | | No data available | As needed |
| Other: | x | | x | Biological criteria impaired waters (DEQ) | Stream and streamside restoration, riparian planting |

Focus Area Selection Criteria

Increased H2O Temp
Dissolved Oxygen
Turbidity
E.coli
Biological Criteria



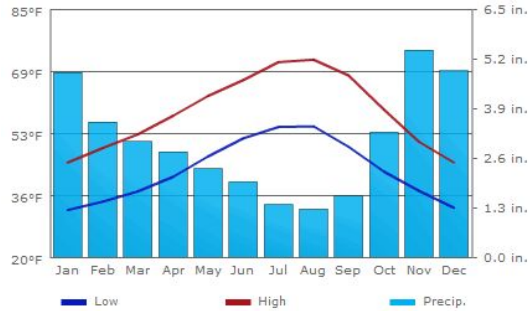
Riparian Land-use of the Siletz Basin



Vegetation by Numbers

| <u>SVA</u> <u>Map Category</u> <u>(Alphabetical)</u> | <u>2019: Pre-Assessment</u> <u>(or Conditions at Beginning</u> <u>of Biennium)*</u> |
|---|---|
| <u>Ag Infrastructure</u> | <u>5.45</u> |
| <u>Bare</u> | <u>4.58</u> |
| <u>Bare Ag</u> | <u>5.03</u> |
| <u>Grass</u> | <u>15.80</u> |
| <u>Grass Ag</u> | <u>253.54</u> |
| <u>Not Ag</u> | <u>443.36</u> |
| <u>Shrub</u> | <u>120.09</u> |
| <u>Shrub Ag</u> | <u>1.29</u> |
| <u>Tree</u> | <u>684.75</u> |
| <u>Tree Ag</u> | <u>0</u> |
| <u>Water</u> | <u>0</u> |
| <u>Total Acres</u> | <u>1533.90</u> |
| <u>Total Ag Acres Assessed</u> <u>(= Total Minus "Not Ag")</u> | <u>1090.54</u> |

Ecological Challenges



Proposed Interventions

| | |
|--|---|
| Fill out rows A through F when pre-assessment is complete: | |
| A. Assessment class(es) that will be used to show progress: <i>Use one or more classes from the assessment method (Table 6) that will show progress toward improving water quality</i> | Tree + Shrub |
| B. Conditions at beginning of 2019-2021 biennium (July 1, 2019): <i>Use number and units from Table 7, for class(es) listed in A</i> | $685 + 120 = 805$ acres |
| C. Total ag area assessed (exclude Not Ag class): <i>Use final row of Table 7 (Total Ag Area Assessed); include units</i> | 1,091 acres |
| D. Percent at beginning of 2019-2021 biennium (July 1, 2019): <i>Divide B by C = $[B / C]$ or $[B \div C]$</i> | $805 \div 1,091 = 73.8\%$ |
| E. How much progress can you achieve in 2019-2021? <i>Provide amount and percent to increase (or decrease)</i> | 23 acres (0.2%) |
| F. Milestone for 2019-2021 biennium (June 30, 2021): <i>Add current conditions amount (B) + amount to improve (E)</i> <i>Add current conditions percent (D) + percent to improve (E)</i> | $805 + 23 = 828$ acres $73.8\% + 0.2 = 74.0\%$ |
| Fill out row G at the end of the biennium: | |
| G. Actual conditions at end of 2019-2021 biennium (June 30, 2021): <i>In Q8 (or earlier if Focus Area is closing mid-biennium), report number and units from Table 7, for class(es) listed in A</i> | |

Biennial milestone:
Increase native tree/shrub cover in riparian area (35 ft from channel) by 23 acres or 0.2 % of total area

Activities include riparian planting, invasive removal, livestock fencing



FY19-20 Siletz Watershed Restoration



Riparian plantings,
fencing along 5
properties on
Schooner Creek

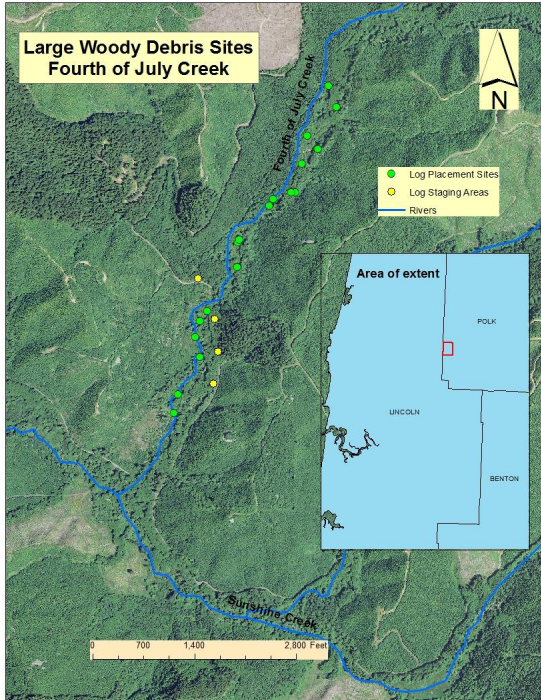


- Approx. 3,500 shrubs and willow stakes
- 2000 trees
- 1,825 feet of riparian fencing



Siletz Watershed Restoration

4th of July Creek



Before - 2017



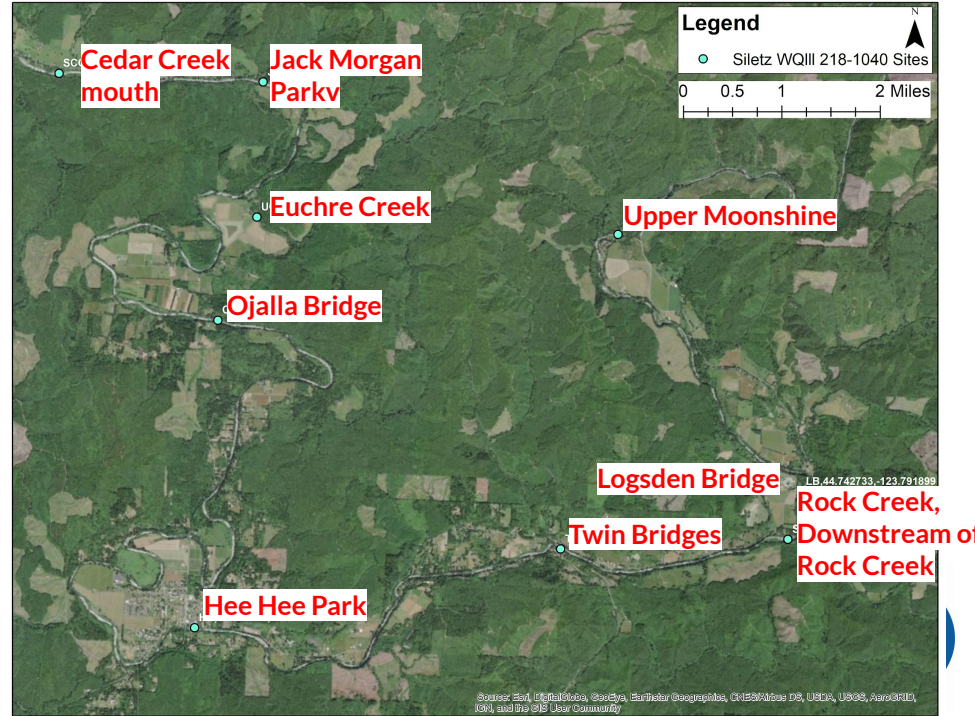
After - 7/2020

- Large Wood Placement project with ODFW partners / Salvage logs from MidCoast Watersheds Council
- Wood installed in 2019; Plantings (400 spruce) installed in 2020



Siletz Water Quality Monitoring

- Monthly data collection at 10 locations from 6/2018 until 11/2019
- Effort was third phase of water quality monitoring: Phase 1 sampling was 2011-12, Phase 2 2013-15



Siletz Water Quality Monitoring

- In 2018-19, collected the following metrics:
 - Water temperature
 - Dissolved Oxygen (DO)
 - pH
 - Conductivity
 - Nitrate
 - Total Nitrogen (TN)
 - Total Phosphorus (TP)
 - Turbidity
 - Algal assessment (low, med, high)



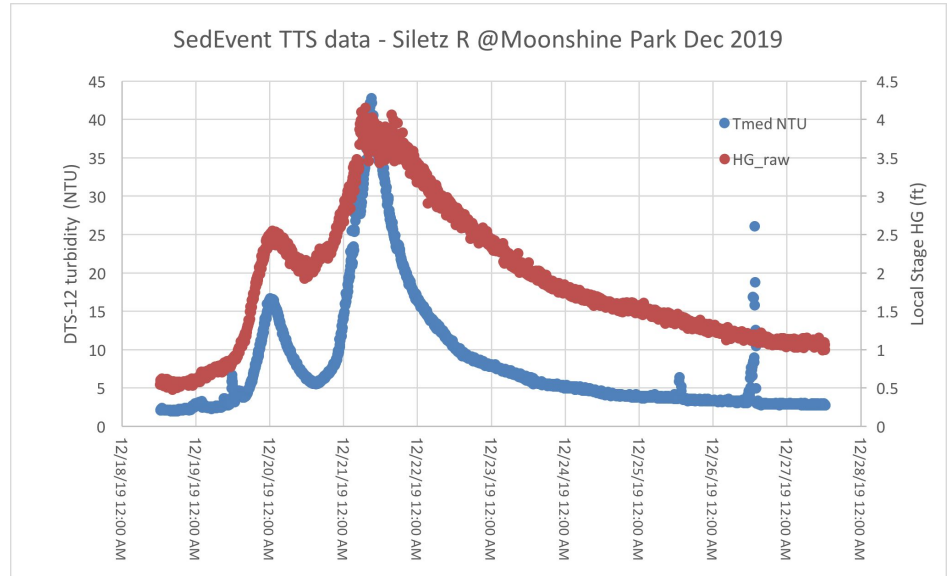
Siletz Turbidity Threshold Sampling

- Sampler installed November 2019 with DEQ partners



Siletz Turbidity Threshold Sampling

- One storm event recorded from 12/18/19 - 12/28/19
- January 2020 storm even blew out foundational infrastructure and damaged sensor parts



Siletz Coho Business Plan Stakeholder Engagement 2020-2022



- Series of in person workshops were proposed to take place winter through summer 2020 in 5 Siletz subbasins
- Workshop development on Lower Drift Creek levee removal project (March 6th)
- Remaining proposed activities projected to 2021-2022 (COVID)



| | Basin | | | | |
|---|---------------------------|--------|---------|-------------------|---------|
| | Salmon/ Devils Lake | Siletz | Yaquina | Alesea/ Beaver | Yachats |
| <i>Monitoring</i> | | | | | |
| Mid Coast Monitoring Project 218-1035 | x | x | x | x | x |
| Siletz Water Quality Monitoring 218-1040 | | x | | | |
| OHA Turbidity Threshold Sampling | | x | | | |
| ODA Temperature Monitoring | | | | | x |
| City of Newport stormwater sampling | | | x | | |
| Lincoln County Domestic Well Testing | | x | x | | |
| <i>Watershed Restoration</i> | | | | | |
| Schooner Creek Riparian Restoration | | x | | | |
| 4th of July Creek Restoration | | x | | | |
| Sunshine Creek Riparian Restoration | | x | | | |
| Long Prairie Creek Riparian Restoration | | x | | | |
| Grant Creek Gutter Improvement | | | x | | |
| Cascade Pacific Mill/Slack Creek | | | x | | x |
| <i>Invasive Species Control</i> | | | | | |
| USFS Good Neighbor Agreement - Poole Thin | | | | x | |
| Alesea Steward Group Noxious Weed Control Project | | | | x | x |
| <i>Outreach and Engagement</i> | | | | | |
| Siletz Coho Business Plan Stakeholder Engagement | | x | | | |
| Yachats Best Management Practices DEQ 007-19 | | | | | x |
| Mid Coast Water Planning Partnership | x | x | x | x | x |

Alesea/Beaver Basins

- Spawning surveys:
 - Drift Creek
 - N Beaver
 - S Beaver
 - Fall Creek
 - Mainstem
- Stream Habitat surveys
- Project coordination for invasive species removal
- MCWPP field tours - Beaver Creek and Seal Rock Water District



Alsea/Beaver Basins

2019 Habitat Surveys (Aquatic Habitat Inventories):

- Record Creek (**pre restoration** - Large wood placement)
- Bummer Creek (**pre restoration** - Large wood placement)
- South Fork Alsea (**pre restoration** - Large wood placement)
- Little Lobster Creek (**post restoration** survey - Large Woody Debris)



| | Basin | | | | |
|--|---------------------------|--------|---------|------------------|---------|
| | Salmon/ Devils Lake | Siletz | Yaquina | Alsea/ Beaver | Yachats |
| <i>Monitoring</i> | | | | | |
| Mid Coast Monitoring Project 218-1035 | x | x | x | x | x |
| Siletz Water Quality Monitoring 218-1040 | | x | | | |
| OHA Turbidity Threshold Sampling | | x | | | |
| ODA Temperature Monitoring | | | | | x |
| City of Newport stormwater sampling | | | x | | |
| Lincoln County Domestic Well Testing | | x | x | | |
| <i>Watershed Restoration</i> | | | | | |
| Schooner Creek Riparian Restoration | | x | | | |
| 4th of July Creek Restoration | | x | | | |
| Sunshine Creek Riparian Restoration | | x | | | |
| Long Prairie Creek Riparian Restoration | | x | | | |
| Grant Creek Gutter Improvement | | | x | | |
| Cascade Pacific Mill/Slack Creek | | | x | | x |
| <i>Invasive Species Control</i> | | | | | |
| USFS Good Neighbor Agreement - Poole Thin | | | | x | |
| Alsea Steward Group Noxious Weed Control Project | | | | x | x |
| <i>Outreach and Engagement</i> | | | | | |
| Siletz Coho Business Plan Stakeholder Engagement | | x | | | |
| Yachats Best Management Practices DEQ 007-19 | | | | | x |
| Mid Coast Water Planning Partnership | x | x | x | x | x |

Yachats Basin

- Spawning surveys:
 - N Fork Yachats
 - S Fork Yachats
 - School Fork Yachats
- Long-term temperature monitoring
- Tree planting and Project development with Yachats River Landowners



Temperature monitoring in Yachats River

- Loggers placed in 3 locations representing Upper, Middle, and Lower Yachats River
- In 2019, Loggers deployed in May and retrieved November 2019
- In 2020, Loggers deployed in June and retrieved November/December 2020
- Loggers will be installed April/May 2021



Temperature monitoring in Yachats River

- Loggers placed in 3 locations representing Upper, Middle, and Lower Yachats River
- In 2019, Loggers deployed in May and retrieved November 2019
- In 2020, Loggers deployed in June and retrieved November/December 2020
- Loggers will be installed April/May 2021



Upcoming Work 2021-23



Community Outreach and Education Events

Native Plant Sale - December 2021

Lincoln Soil and Water Conservation District

Oregon State University
Extension Service
Lincoln County

ANNUAL NATIVE PLANT SALE

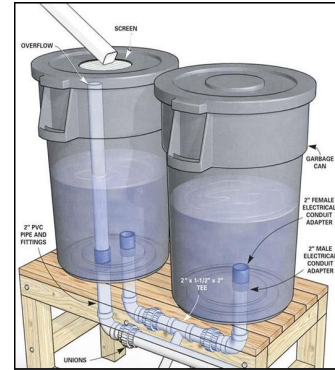
SATURDAY DEC 8
SUNDAY DEC 9
9:00-3:00

NEWPORT HIGH SCHOOL
322 NE EADS STREET
NEWPORT, OREGON

PAYMENT ACCEPTED BY CASH OR CHECK ONLY
QUESTIONS? JOSH@LINCOLNSWCD.ORG (541)263-2631
WWW.LINCOLNSWCD.ORG

Public Workshops:

Stay tuned for workshops geared toward Siletz and Yachats communities



Erosion Control
with Native Plants

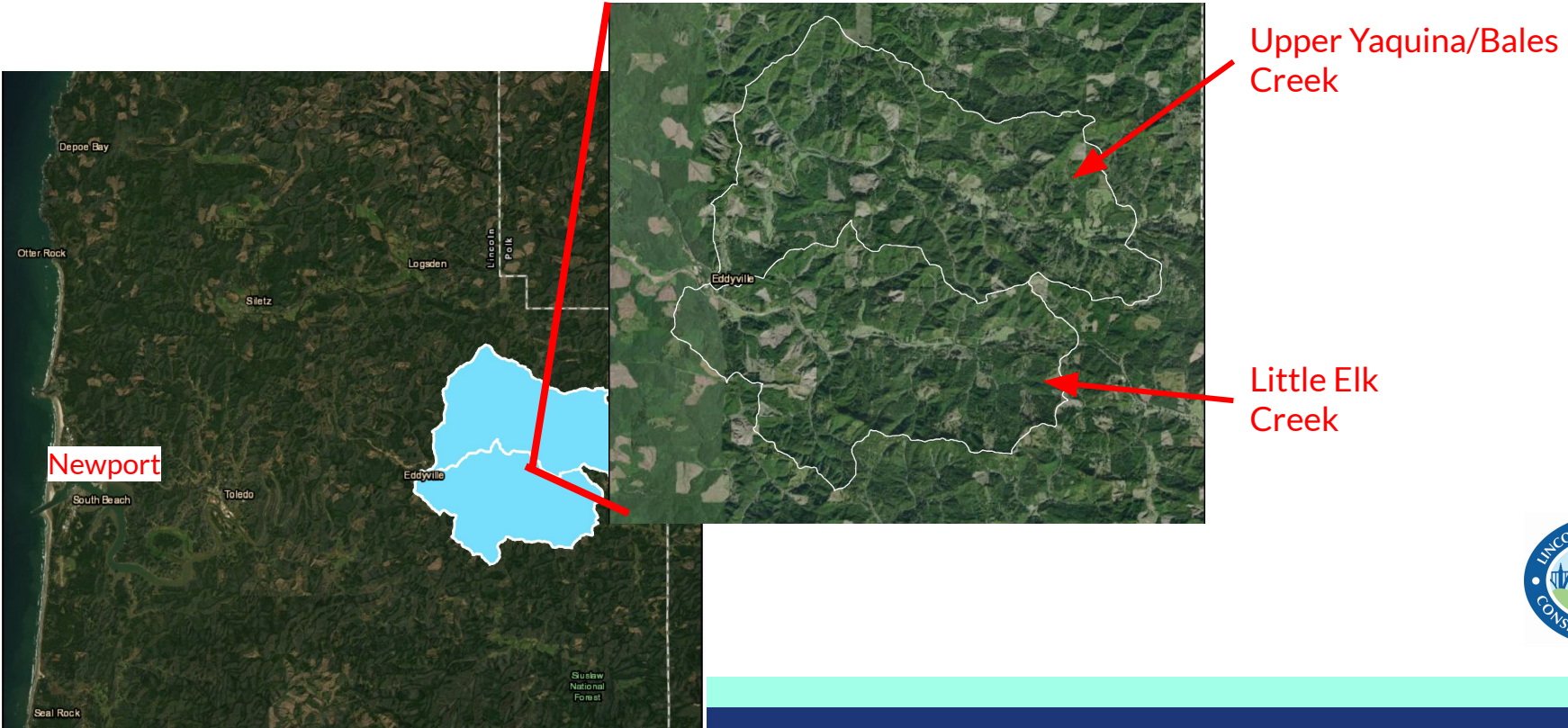


Oregon State University
Extension Service
Lincoln County

Emily-Bell Dinan, Conservation Program Coordinator
Josh Seekatz, Water Quality Technical Specialist

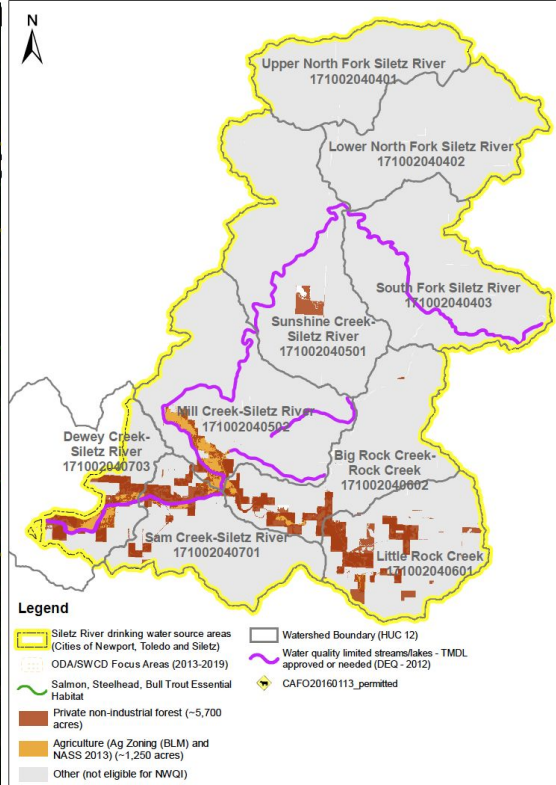
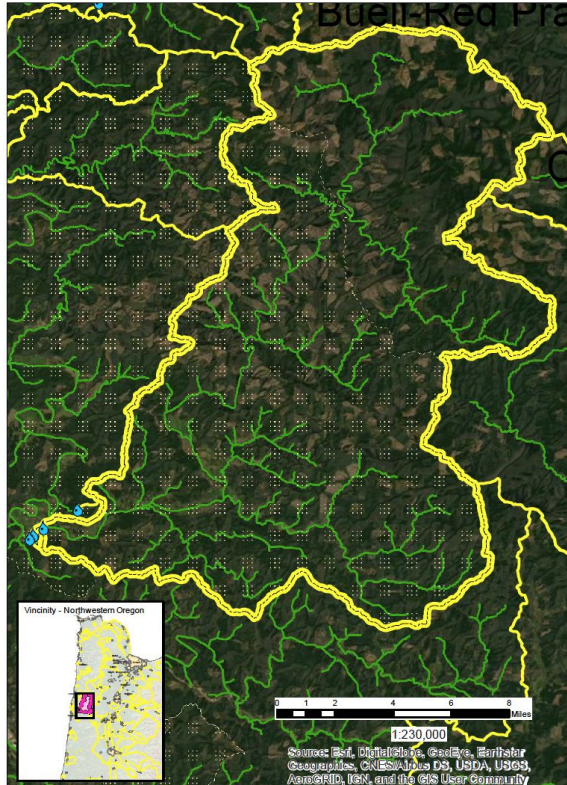
12/9/2019

ODA Strategic Implementation Area (SIA)



Oregon potential NRCS NWQI SWP Project - Cities of Newport, Toledo and Siletz: Siletz River -Mid-Coast Basin

Susceptibility Criteria Summary: * Intense Ag landuse (crops and animals) and small woodlands/family forest in the lower portion of the watershed close to intakes; * Concerns with pesticide detections; * Previous area of concern for Harmful Algal Blooms * Lincoln SWCD Agricultural Focus Area * High soil erosion potential; * Essential Salmon Steelhead or Bull Trout Habitat; * Water Quality Limited 303(d) TMDL needed or completed for Turbidity; * High use for recreation and fishery.



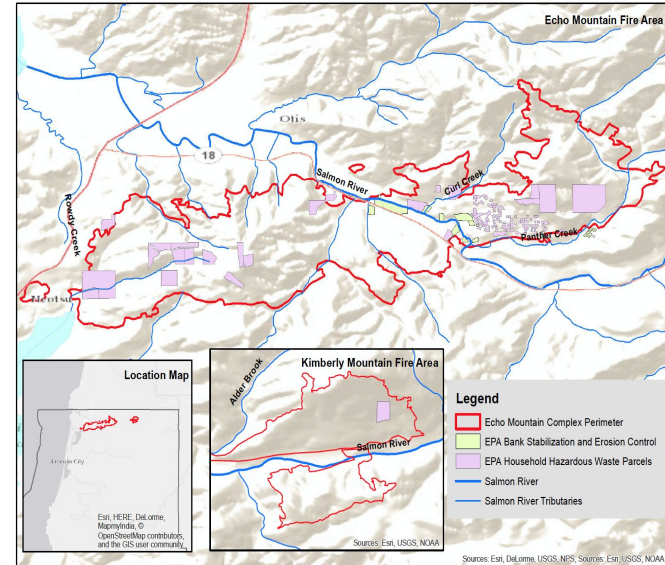
Siletz Source Water Assessment and Outreach Plan FY 21-23



Echo Mountain Fire Recovery

- Work with Salmon Drift Watershed Council, MidCoast Watersheds Council, to coordinate landowner outreach and oversee site plantings on properties impacted by Echo Mountain Fire
- Outreach planned for February - March, plantings will be ongoing

Echo Mountain Complex (Lincoln County, OR) Fire Recovery



Invasive Species Control

- Upland noxious weed control in Siuslaw National Forest, FY 20-23
- Control of knotweed, policemen's helmet, yellow flag iris throughout Alsea Basin FY 21-22



Questions?



Get in touch!

jen@lincolnsxcd.org

shannon@lincolnsxcd.org

www.lincolnsxcd.org

Facebook.com/LincolnSWCD



© Gary Nafis

