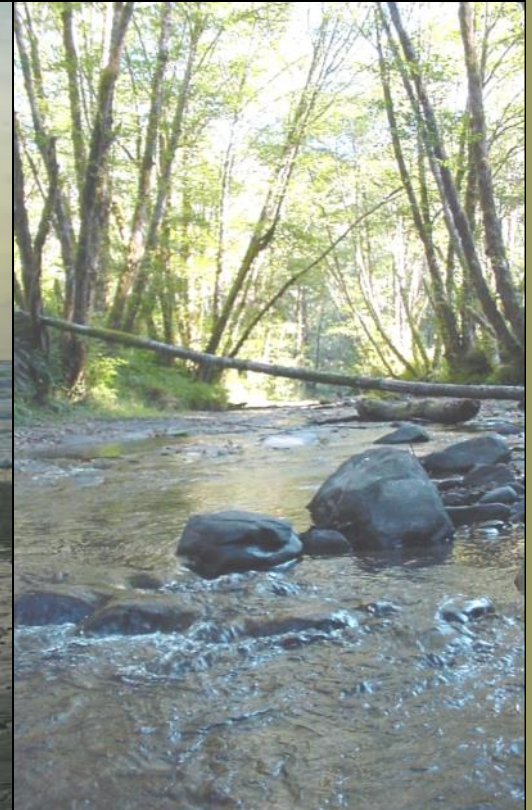


Lincoln Soil and Water Conservation District 52nd Annual Report 2006 - 2007

What's Inside?

MESSAGE FROM THE CHAIR	2
ELECTED OFFICIALS	3
2006 - 2007 AUDIT	4
2007 - 2008 WORKPLAN	5
WATERSHED QUALITY PROGRAM	6
TMDL DEVELOPMENT	7
BIO-SURVEY REPORT	8-9
FISHER PLANTING PROJECT	10
INVASIVE SPECIES PROGRAM	11
MIDCOAST WATERSHEDS COUNCIL REPORT	12
USDA/NRCS REPORT	13





Message From The Chairman:

Lincoln Soil and Water Conservation District has been very active this year. We have added a lot of capacity by hiring new and returning staff.

- In February 2007, the District hired Ken Hobson as our new Watershed Technical Specialist. Ken came on board and didn't hesitate to jump in with both feet. Ken has become involved with a number of continuing projects as well as initiating new ones such as the cooperative nursery project that will begin in October 2007.
- Stephanie Payne remained with the District after the 2006 Knotweed season and wrote a grant to hire fisherman to implement a riparian planting project. The grant was funded through the Oregon Watersheds Enhancement Board as part of the 2006 Salmon State of Emergency grant program. The "Fishing for Trees" riparian planting project began in February 2007. Stephanie also overseen the 2007 Knotweed season.
- Eddie Huckins, Christopher Wood and Mark Stone have continued with the data collection for both the fish surveys and the TMDL (total maximum daily load) data collection for the MidCoast region. It is heartening to see all the work we are involved in.

One of the most paramount components of our services is education. The District feels very strongly about getting the word out to our clients, the citizens of Lincoln County, about the latest methods used for stewardship of the natural resources around them. It is very evident that the word is getting out to the community through the efforts of our staff and Directors. I believe that people are beginning to see the need for the services we provide in rural areas as well as our services in the urban areas.

Over the last few years, the rate of development, in Lincoln County, has increased dramatically and has brought the importance and need for our services into a sharper focus.

I salute all those folks that are involved in making the work of the District successful.

There is much more work to be done.

Sincerely,

Robert vanCreveld



Robert vanCreveld
Chairman of the Board
Director At Large



Meet Your Lincoln County Elected Officials!

A “District Director” is a person who has been elected or appointed to serve on a conservation district board. District Directors serve a four year term on a voluntary basis. Some customary duties of a District Director include but are not limited to the following:

- Directors are to keep informed of local conservation issues.
- Directors will promote the Districts work to local landowners.
- Directors will promote the Districts work to legislators and other decision makers regarding the District.
- Directors will work effectively with District staff and cooperating agencies.
- Directors will oversee that implementation of District programs is done effectively and efficiently.
- Directors will ensure that the board’s policies and activities are consistent with the policies of the Oregon Dept of Agriculture, Natural Resources Division and the Oregon Soil and Water Conservation Commission.

If you would like more information concerning District Directors “Roles and Responsibilities”, please refer to the Oregon Soil and Water Conservation District Guidebook by calling (541) 265-2631 or reviewing a copy in our office.



Jim Stafford
Director Zone 1



Ned Lentz
Director At Large



Joe Steenkolk
Secretary
Director Zone 2



Rennie Ferris
Director
Zone 5



Sterling Grant
Vice Chairman
Director Zone 3



Wayne DeMoray
Treasurer
Director Zone 4



2006 - 2007 Annual Audit

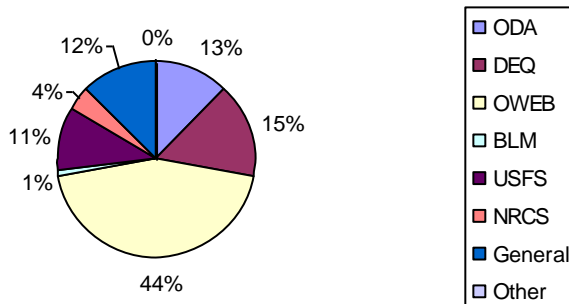
Lincoln SWCD was established by statute under the administrative oversight of the Natural Resources Division of the Department of Agriculture. The District is a subdivision of state government. The District is exempt from Oregon state budget laws because it is organized under ORS chapter 568 as a soil and water conservation district that does not levy an ad valorem tax. The Board of Directors prepares a cash basis budget for managerial purposes. The District is a municipal corporation exempt from federal and state income taxes.

For a detailed copy of the 2006 — 2007 Audit, visit the LSWCD office.

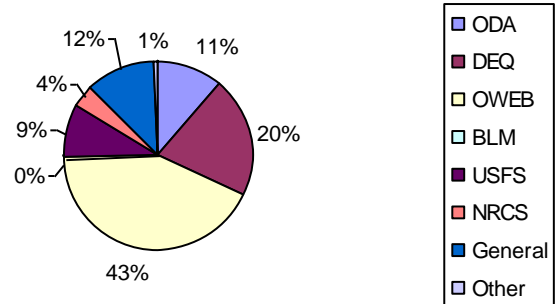
All Funds Statement of Revenues, Expenditures and Changes in Fund Balances Budget and Actual As of June 30, 2007

Revenues:	Budget	Actual
Grant Income	414,223	397,381
Administrative Income	31,908	38,830
Rent Income	19,200	17,800
Contract Revenue	15,000	10,590
Interest	20	31
Other Revenues	960	1,355
Total Revenues	\$481,311	\$465,987
Expenditures:		
Personal Services	266,056	268,343
Material and Supplies	230,454	200,290
Capital Outlay	0	2,130
Contingency	1,238	0
Total Expenditures	\$497,748	\$470,763
Excess of Revenues over (under) Expenditures	(16,437)	(4,776)
 Fund Balance—7-1-06	 \$16,437	 \$12,616
Fund Balance—6-30-07	\$ 0	\$ 7,840

2006 - 2007 Income By Fund



2006 - 2007 Expenses By Fund



2007 - 2008 Annual Work Plan

MidCoast Basin Non Point Source Pollution Program

Objective: Provide conservation planning, technical, and financial assistance to landowners and operators.

Primary Goal: Provide assistance to help landowners and operators plan and implement conservation endeavors.

Federal Program Assistance

Objective: Implement programs that assist constituents with natural resource concerns.

Primary Goal: Provide assistance to help landowners and operators get conservation on the ground.

MidCoast Watershed Evaluation and Restoration Project

Objective: Implement programs that assist constituents with natural resource concerns.

Primary Goal: Collect data to monitor the benefits of projects that have previously been completed.

Community-Based Attainment of Water Quality Standards in Oregon's MidCoast Watersheds

Objective: Coordinate collection, analysis, and assembly of data for the development of temperature, bacteria and dissolved oxygen TMDLs. Demonstrate best management practices to improve water quality

Primary Goal: Provide data to DEQ staff for TMDL development and technical/financial assistance to landowners for ameliorating water quality-limiting conditions

Invasive Species Control Program

Objective: Implement programs that assist constituents with natural resource concerns.

Primary Goal: Assist landowners in targeted areas with identification and eradication of invasive species.

Fishers Program

Objective: Implement programs that assist constituents with natural resource concerns.

Primary Goal: Hire 5 fishers to plant trees, maintaining tree plantings, debris removal, and cross drain culvert removal.

General District Operations

Objective: Administer district operations.

Primary Goal: Effectively and efficiently operate the District.



Water Quality Program

Through the Water Quality Program, the Conservation District assists landowners to put conservation practices on the ground. District Technical staff provide a variety of services to Lincoln County landowners to address natural resource concerns, to design and implement conservation projects, and to provide information, technical assistance and access to incentives that will help landowners meet natural resource goals. These water quality services include:

- Assistance to protect and restore riparian areas and wetlands; improve crop, pasture, and forest lands; and manage wildlife habitat.
- Voluntary Water Quality Stewardship and Farm Plans designed specifically for your needs and your property.
- Education programs, demonstration projects, tours, workshops, special events, publications, and one-on-one consultations.
- Methods to manage livestock and manure which will reduce your costs and protect your land and water quality.

The Conservation District stresses voluntary action to resolve natural resource concerns. To accomplish this, the District brings federal, state, and private foundation dollars to Lincoln County to provide financial assistance and resources to landowners. The District focuses specifically on local resource problems, coordinating efforts and cooperating with private landowners, and with local, state, and federal agencies.

Water Quality Projects

Heavy use protection	160'	Roof runoff structures	2
Use Exclusion	1 site, 30 acres		
Tree Shrub Establishment	20 sites, totaling 365,770 sq ft (8.4 acres)		



Solar powered off-stream water system on Depot Creek

2006 – 2007 Program Accomplishments

Landowners assisted	93	Workshops	4
Presentations	5	Demonstrations	2
Tours	1	Displays (stream table)	4
School Class visits	3	On-site evaluations	16
Water quality projects	31	Grant applications	4
Fact sheets distributed	180	Newspaper articles	9
Farm plans	2	Farm plans in progress	3

Report submitted by: Ken Hobson, Water Quality Specialist

Mid Coast Basin Monitoring and Data Management for TMDL Development

The primary purpose of this project is to gather data to support development of Total Maximum Daily Loads (TMDLs) for streams in the Mid Coast Basin identified as impaired on Oregon's list of impaired waters required by Section 303(d) of the Clean Water Act. There are about 2,765 miles of rivers and streams in the Mid Coast Basin, including significant river systems draining to the Pacific Ocean (Yachats, Yaquina, Salmon, Siletz, Siuslaw), and smaller streams draining directly to the ocean (Beaver Creek, Tenmile Creek). Of these, 36 rivers and streams have been identified which exceed the temperature criteria, 12 have been listed for fecal bacteria violations, seven are listed for sedimentation, and four are listed for dissolved oxygen deficiencies.

Funds are also available through this project for landowners to implement best management practices that enhance and protect water quality such as fencing livestock out of streams, planting trees along the banks of streams, preventing sediment and nutrients from entering the stream, and installing off-stream watering systems. Thus far, 5 implementation projects have been completed, 8 projects are on going, and 5 projects are planned and set to begin in 2008. Completed projects include riparian plantings on Indian Creek, West Fork Deadwood Creek, Crowley Creek, Olalla Creek, and South Beaver Creek, along with horse paddock demonstration at the Lincoln County Fairgrounds and a solar of-stream water system for livestock on Depot Creek

In 2005, various watershed monitoring groups under the direction of Oregon Department of Environmental Quality (DEQ) and Lincoln SWCD staff collected data to be used for the development of temperature TMDLs for 303(d) listed streams in the Mid Coast Basin. This project continues using this organizational structure to prepare quality assurance project



Samples being collected.

plans and sample and analysis plans and coordinate collection, analysis, and assembly of data for the development of bacteria, dissolved oxygen and sedimentation TMDLs. This past year, Lincoln SWCD contracted with local water quality monitoring groups and individuals to collect water samples from streams throughout the Mid Coast Basin. To facilitate analysis of samples collected in the Yaquina and Siletz watersheds, a new laboratory was established at the Oregon Coast Aquarium in partnership with Surfriders Foundation. In addition, contracts were set up with the Confederated Tribes of Siletz Indians to manage water quality data and enter the data into the DEQ database.

Report submitted by: Eddie Huckins, Project Manager



MidCoast Watershed Evaluation and Restoration Project

Spring Chinook Spawning Surveys

Before starting on coho spawn surveys, the MidCoast Watershed Evaluation and Restoration Project (MCWERP) crew did spring chinook surveys on the Alsea and Siletz Rivers. This consisted of surveying approximately 20 miles of the Alsea which were split into four reaches and 14.5 miles of the Siletz that were split into three reaches. The surveys were drifting surveys conducted every seven to ten days.

Coho Spawning Surveys

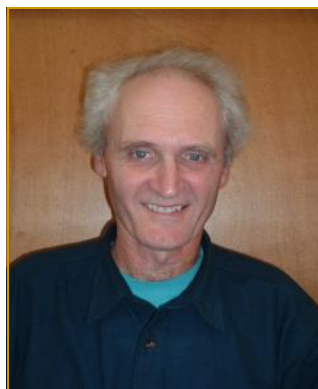
The Oregon Department of Fish and Wildlife (ODFW) selected twenty different stream reaches for spawning surveys. These stream reaches were located in the basins of the Siletz, Salmon, Yaquina, Alsea and Yachats Rivers as well as two ocean tributaries. In all, 16 miles of streams were surveyed once every seven to ten days. Extensive property owner research was completed on each stream reach to ensure that all property owners were contacted before any survey was conducted. The crew uses all contacts, with property owners, as a chance to discuss potential restoration opportunities and watershed issues.

Steelhead Spawning Surveys

Thirty stream reaches were surveyed once every ten to fourteen days. In all, 31 miles of streams were surveyed in the basins of the Alsea, Siletz, Salmon, and Yachats Rivers as well as two ocean tributaries.

Aquatic Habitat Inventory

Six streams, in the Mid Coast area, were inventoried. These surveys were conducted after helicopter log placements projects had been completed on the streams. Those streams were the North Fork Yachats, South Fork Yachats, Grass Creek, Williamson Creek, and Sampson Creek. In all, a total of 12.7 miles were surveyed.



Mark Stone
Bio-Surveyor



"Jimmy"

*In loving memory of an outstanding crew
member.*



Christopher "Kip" Wood
Bio-Surveyor

MidCoast Watershed Evaluation and Restoration Project Continued....

Educational Outreach

Watershed issues and restoration potential were discussed with numerous property owners during individual contacts.

A presentations was made at the 2006 Oregon Watersheds Enhancement Boards (OWEB) biennial conference in Seaside.

The Stream Demonstration Model was presented at the Hatfield Marine Science Center (HMSC) Sea Fest Fair. This event was in cooperation with USDA Natural Resources Conservation Service (NRCS), Lincoln SWCD, and the Mid Coast Watersheds Council's (MCWC) education coordinator.

Inter Agency Cooperation

Aquatic habitat inventory site selections were made in cooperation with Oregon Department of Fish and Wildlife (ODFW), MCWC, and US Forest Service (USFS) for helicopter log placement projects. The Lincoln SWCD provided the Department of Environmental Quality (DEQ) with habitat data for Beaver Creek.

Equipment was also provided to the Salmon-Drift Watershed Group for collection of stream temperature data.

Report Submitted By: Kip Wood and Mark Stone, Project Managers



Example of a survey site.



Fisher Riparian Planting Project

Lincoln Soil and Water Conservation District has had a successful start with their new Riparian Planting project that started in March of 2007. The project is primarily funded by the Oregon Watershed Enhancement Board (OWEB) with additional funding and/or services provided by Lincoln SWCD, USDA Natural Resources Conservation Services, Oregon Department of Agriculture, MidCoast Watersheds Council, and the US Forest Service.

The OWEB funds received for the Riparian Planting project were provided by the 2006 Salmon State of Emergency grant program. Within the stipulations of this special grant program, Lincoln SWCD is required to hire only fishermen registered with the Oregon Salmon Commission in coastal Oregon to do the work, and the work done must improve the intrinsic habitat for Coho salmon in accordance with The Oregon Plan for Salmon and Watersheds.

With riparian planting as our focus, seven private landowners and the US Forest Service provided Lincoln SWCD with the opportunity to improve our waterways in a variety of ways. Along with planting over 5,000 native plants and shrubs, the five hired fishermen will also be removing old fencing and cables from the streams, releasing previously planted trees from protective tree tubes, removing ineffective culverts, and marking trees for future wood placements into the streams.

Stephanie Payne, the Riparian Planting Project Manager, is currently gathering new potential projects for the next planting season.

Report Submitted by: Stephanie Payne, Project Manager



Stephanie Payne

THE FISHERMENCREW

Crew Lead:

Robert Ward

Crew:

Billy Sigler

Carl Humphrey

Allen Townsend

Gary Stickrod



Tree planting site with cages.

Invasive Species Control Program

Lincoln Soil and Water Conservation District is continuing into its fourth knotweed season by controlling the spread of Japanese knotweed, Himalayan knotweed, and Giant knotweed, all of which reside in the Oregon Department of Agriculture's Noxious Weed List. Taking over the program is Stephanie Payne, former 2006 knotweed field technician under the supervision of previous program manager Meredith Savage. Funding for the Invasive Species Control Program is provided by Lincoln SWCD, US Forest Service and the Bureau of Land Management.

June 4, 2007 marked the beginning of the knotweed control season with the help of two field technicians, Paul Ahnert (also from the 2006 knotweed crew) and Billy Wilson. Paul and Billy will spend their summer treating knotweed throughout Lincoln County, as well as informing and educating the public by way of mailing information and pamphlets, and by attending the Farmers Market and the Sea Fest Festival, and answering questions about control.

The goal of the program this season is to treat some of our main waterways and their tributaries. On the list is Salmon River, Yaquina River, Alsea River, and for the first time Yachats River. Once these infestations receive treatment, Paul and Billy will pursue treatment of the smaller sites not posing a direct threat of the waterways.

Throughout this season, more funding will be sought to continue the program into the 2008 knotweed season. With this money, the program will expand to include restoration with native shrubs on sites where knotweed has been eradicated to prevent future reinfestation.

Report Submitted by: Stephanie Payne, Project Manager



2006 CREW

Jessica Cheek, Paul Ahnert, Stephanie Payne, Arden Perkins, and Megan DeBlois.



2007 CREW

Paul Ahnert and Billy Wilson



MidCoast Watersheds Council

The MidCoast Watersheds Council has had a memorable year, with four major helicopter projects completed, and funding secured for three more. Our strategy of focusing restoration efforts on sub-basins, with limiting factors analyses to determine priorities, is now really paying off. In 2006-2007 we completed major projects on Rock Creek (Devils Lake), and Steer Creek (Siletz), implementing the recommendations from these analyses. We also obtained funds for implementing recommendations for North Fork Beaver Creek, Elkhorn Creek, Preacher Creek, and Little Lobster Creek.

Our success has been greatly enhanced by our numerous partners, including ODFW, USFS, OWEB, Oregon Department of Forestry (ODF), USDA/NRCS, and especially Lincoln SWCD. Lincoln SWCD staff and Directors make contributions to the Council literally on a daily basis. Two Lincoln SWCD Staff members (Kip Wood and Mark Stone) and two Directors (Rennie Ferris and Wayne DeMoray) serve ably on the Council's Board of Directors. Lincoln SWCD staff have been available on a daily basis for consultation on everything from landowner contacts to erosion control to project design. They also have helped greatly with project monitoring. In addition, the Lincoln SWCD has taken the lead, through Ken Hobson's work, in major restoration efforts on Beaver Creek, including implementation of some of our limiting factors results. We are very excited about this Lincoln SWCD focus, as it complements nicely with work that the MCWC is doing higher in the basin.

We look forward to a continuing, mutually beneficial partnership with the Lincoln SWCD.

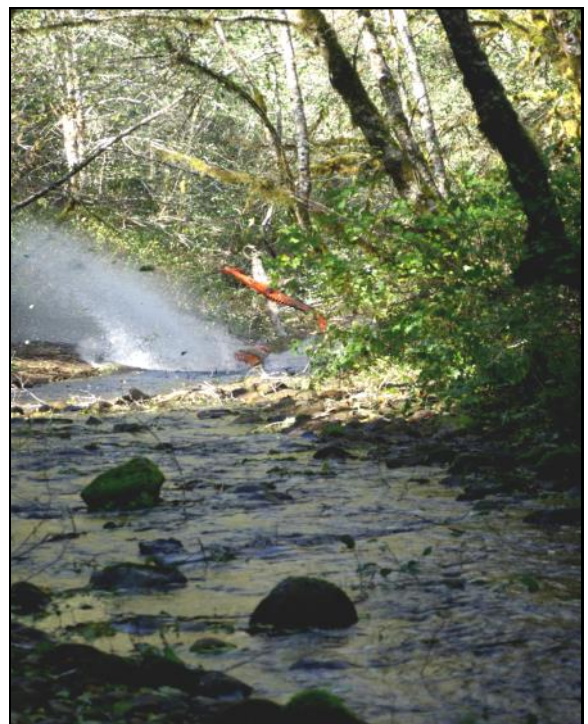
Report Submitted by: Wayne Hoffman, Coordinator



Large wood being transported to stream by helicopter.



Making a splash! Log being placed by helicopter.



United States Department of Agriculture



The Lincoln Soil and Water Conservation District (District) and the Natural Resources Conservation Service (NRCS) have cooperated for many years. NRCS administers several programs of the US Department of Agriculture which pertain to management of natural resources on privately owned lands. The District provides input to the NRCS on local priorities. The years' projects were focused on the District priorities of agricultural water quality, and fish and wildlife habitat improvements.



Under the **Environmental Quality Incentives Program (EQIP)**, an incentive program authorized under the Farm Bill, four landowners in Lincoln County who had been selected for funding in 2005-06, began implementation of conservation practices on over 300 acres of agricultural land. The projects included construction of compost facilities, water runoff management, grazing management, and wildlife habitat enhancements, among others. The project goals are improvement of water quality for the benefit of humans, fish, and wildlife, preventing soil erosion, and improving management opportunities. Small woodland owners are also eligible for the program. This year, the NRCS provided project planning and funding assistance for three properties, totaling over \$120,000 in cost share assistance.

The **Conservation Reserve Enhancement Program (CREP)** is another Farm Bill program. One new contract was established in Lincoln County this year, covering approximately 40 acres of riparian buffers. The land enrolled in this program is managed to benefit wildlife habitat and water quality improvement. Landowners receive an annual payment from USDA for all acreage under contract in the CREP.

Report Submitted by: Kate Danks

Lincoln Soil and Water Conservation District

Mission Statement

The purpose of Lincoln Soil and Water Conservation District is to improve and conserve natural resources on agricultural, forested, private, urban and rural lands in Lincoln County by:

- Providing information, education, and outreach.
- Providing technical assistance to private landowners to develop and implement conservation plans on their property.
- Providing an interface between agencies and landowners.
- Collaborating with federal, state, and local government agencies and groups.

Vision Statement

The Lincoln Soil and Water Conservation District will be recognized and respected in the community by the public and other local agencies. The District will have an effectively trained staff that is knowledgeable about local resource concerns and is courteous and respectful in providing natural resource services and information. The District will also be known as a place in the community where people can turn with their natural resource concerns and know that their voices will be heard. The District will continue to be financially sound and able to offer support to landowners who are conserving, enhancing, and restoring our natural resources.

Values and Guiding Principles

The following values and guiding principles direct the Lincoln Soil and Water Conservation District in how it conducts business, relates to customers, and interacts with the public. The Lincoln SWCD will:

- Address natural resource concerns with landowners in a timely manner.
- Design and implement projects that are consistent with our mission and vision.
- Provide information, technical assistance, and incentives so landowners will meet natural resource goals.
- Work on a voluntary basis with landowners.
- Be accountable in all decisions made concerning the district.
- Be respectful of private property rights and the decisions of landowners.
- Maintain professional interactions with other agencies and the community.

Location:

23 North Coast Highway
Newport, Oregon 97365

Phone: 541-265-2631

Fax: 541-265-9351

Email: Lincolnswcd@midcoastpartners.org

Meetings:

2nd Thursday of the month. 7:00PM