



LINCOLN SOIL AND WATER CONSERVATION DISTRICT



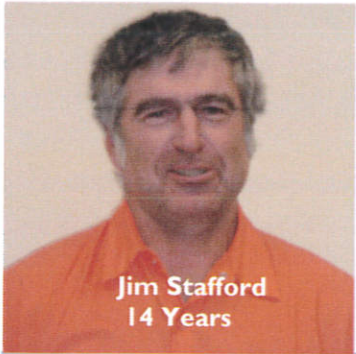
06.23.2017 14:07

www.lincolnswcd.org
Info@lincolnswcd.org
Fax: (541)265-9351

2016-2017 Annual Report
62 Years of Service

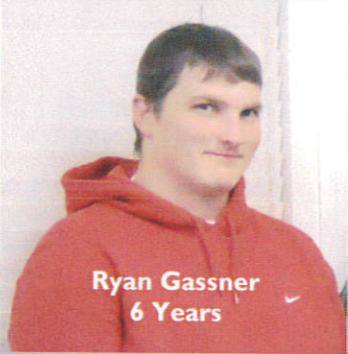
23 North Coast Highway
Newport, Oregon 97365
(541)265-2631

2016-2017 BOARD OF DIRECTORS AND STAFF



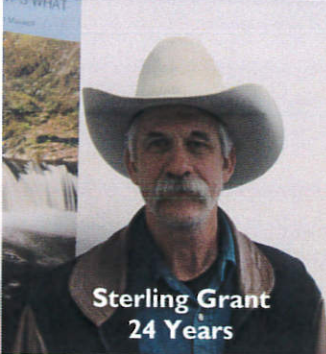
Jim Stafford
14 Years

ZONE 1



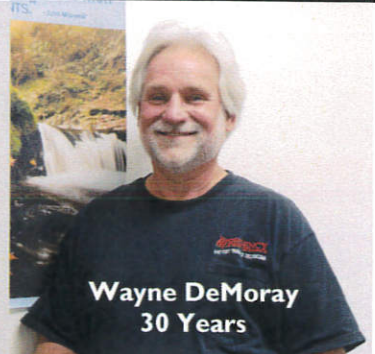
Ryan Gassner
6 Years

ZONE 2



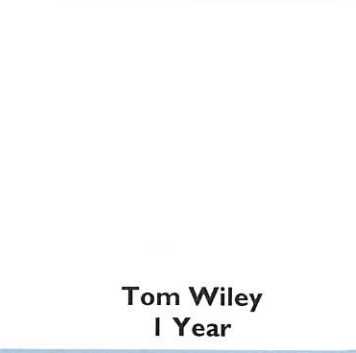
Sterling Grant
24 Years

ZONE 3 — Chair



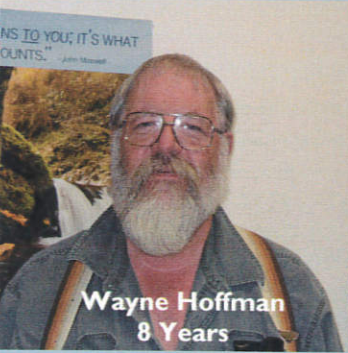
Wayne DeMoray
30 Years

ZONE 4 — Treasurer



Tom Wiley
1 Year

ZONE 5



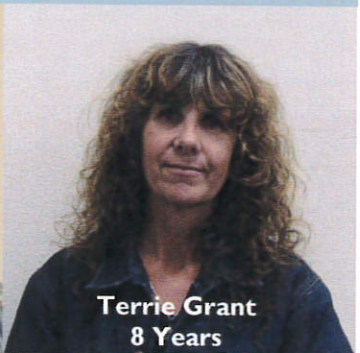
Wayne Hoffman
8 Years

At-Large 1 — Vice Chair



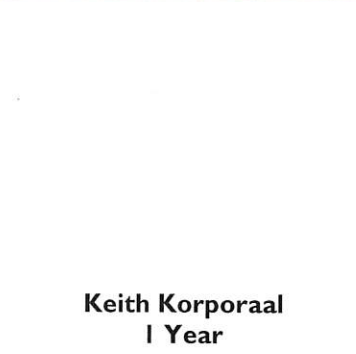
Mark Saelens
7 Years

At-Large 2 — Secretary



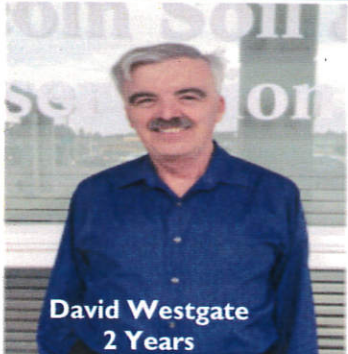
Terrie Grant
8 Years

Associate Director



Keith Korporaal
1 Year

Associate Director



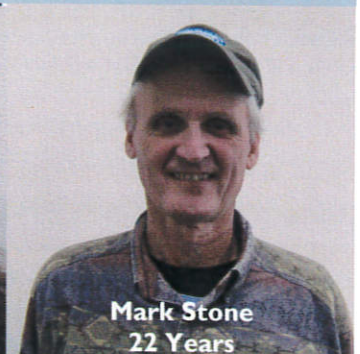
David Westgate
2 Years

District Manager



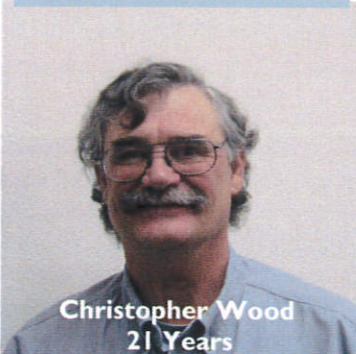
Una Monaghan
4 Years

Watershed Tech



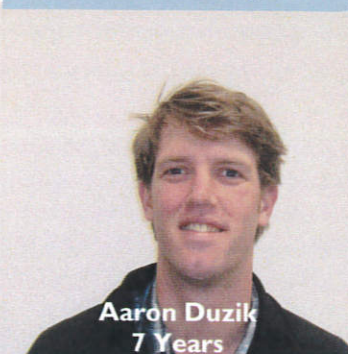
Mark Stone
22 Years

Bio Surveyor



Christopher Wood
21 Years

Bio Surveyor



Aaron Duzik
7 Years

Invasive Species



Invasive Species

The Board of Directors meets the second Thursday of every the month. These meetings are open to the public and begin at 7:00 PM at the District Office.

2016-2017 FINANCIAL STATEMENT

All Funds Statement of Revenues and Expenditures End of Fiscal Year June 30, 2017

Revenues:		Expenditures:	
Grant Income	\$304,397	Personal Services	\$226,360
Administrative Receipts	\$28,294	Other	\$2,234
Rent Proceeds	\$9,279	Administration Expenses	\$28,294
Expense Reimbursements	\$7,572	Office Rent	\$28,800
Other Receipts	\$1,905	Grant Project Costs	\$31,701
	_____	Contract Services	\$31,652
		Utilities and Telephone	\$5,432
		Mileage, Travel & Conf	\$17,048
		Office/Audit Expenses	\$12,128
		Interest Expenses	\$230
Total Revenues	\$351,447	Total Expenditures	\$383,879
Fund Balance as of 7-1-16	\$36,393	Fund Balance as of 6-30-17	\$3,961

Revenues by Funding Source			Expenditures by Funding Source		
OWEB	\$167,614	49%	OWEB	\$123,840	43%
ODA	\$92,678	27%	ODA	\$71,018	25%
USFS	\$40,457	12%	CPRCD	\$48,178	17%
CPRCD	\$25,911	8.8%	USFS	\$41,314	14%
MCWC	\$3,802	1.2%	DEQ	\$3,403	1%
DEQ	\$2,633	0.8%			
Other	\$3,960	1.2%			

ODA—Oregon Department of Agriculture
OWEB—Oregon Watershed Enhancement Board
DEQ—Oregon Department of Environmental Quality

MCWC—MidCoast Watersheds Council
USFS—United States Forest Service
CPRCD—Cascade Pacific Resource Conservation Development

Lincoln SWCD was established by statute under the administrative oversight of the Natural Resources Division of the Department of Agriculture. The District is a subdivision of state government. The District is exempt from Oregon state budget laws because it is organized under ORS chapter 568 as a soil and water conservation district that does not levy an ad valorem tax. The Board of Directors prepares a cash basis budget for managerial purposes. The District is a municipal corporation exempt from federal and state income taxes.

*An outside accounting firm performs an official audit review of all District funds. The final approved audit report is available at the Lincoln SWCD Office.

WATER QUALITY PROGRAM

The Water Quality Program provides landowners with a local source of technical and financial assistance for implementing the best approaches to protecting water and soil resources on farm, rural, and urban areas while maintaining productive lands.

New Faces

The District said goodbye to Watershed Technical Specialist (WTS) Una Monaghan in December 2016. The staff and Board wish her the best. In August 2017, the District welcomed Audrey Sweet as the new WTS. In the interim, the Water Quality Program continued to move forward under the guidance and expertise of Paul Robertson.

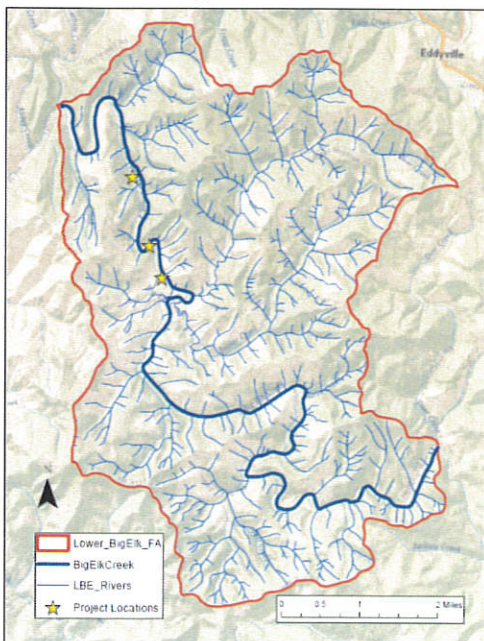
Focus Areas

Every biennium the District chooses an area to focus its efforts in an attempt to show measured improvement in terms of water quality, soil productivity, and habitat. During that two-year period the WTS works with landowners and partner organizations to develop best management practices (BMPs) and restoration projects and to conduct water quality monitoring.

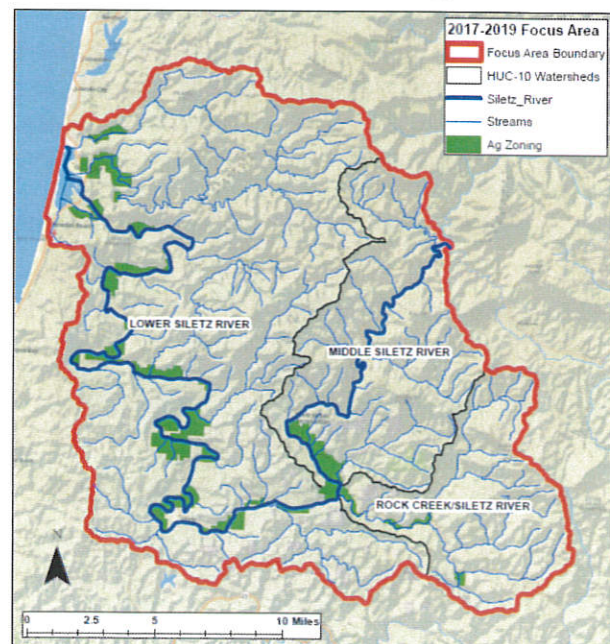
The Lower Big Elk was initially chosen as the Focus Area for the 2013-2015 biennium. There was a tremendous amount of landowner support so the District chose to continue working in the Lower Big Elk during the 2015-2017 biennium.

The Siletz River Watershed was chosen as the District's 2017-2019 Focus Area for numerous reasons. In DEQ's most recent report of impaired waters, released in 2012, several streams in the Focus Area were listed as impaired. Increased water temperature was the most common impairment; however E.coli, dissolved oxygen, turbidity, and biological criteria also threaten water quality and watershed health. In addition to the need for developing BMPs and restoration work to address the documented impairments, several partner organizations will be working in the Siletz River Watershed in the coming years and there will likely be opportunities for collaboration and partnership building to support the shared goals.

Lower Big Elk Focus Area



Siletz River Focus Area



WATER QUALITY PROGRAM

Water Quality Monitoring

There was no active water quality monitoring conducted during the dates covered by this annual report. Water quality monitoring began again in July 2017, details will be provided in next year's annual report.

Outreach and Events

Outreach began in 2017 for the Siletz River Focus Area. Letters were sent to landowners identified as having excessive streambank erosion from a 2012 Stream Bank Erosion Assessment.

WATER QUALITY & HABITAT RESTORATION PROGRAM

On-the-ground conservation and restoration projects directly support and restore resiliency of the watershed services such as clean water, productive soil, and healthy habitats for fish, wildlife, insects, and humans alike. One of Lincoln SWCD's main priorities is to work with private landowners to implement best management practices to ensure lasting positive effects for our watersheds. By providing direction and guidance to interested landowners, Lincoln SWCD aims to empower local residents with the knowledge to implement conservation and restoration projects on their own.

Wolf Creek Off-Stream Water System

The watering system on this site did not have the storage capacity to meet the demand of the livestock. Therefore, the livestock accessed Wolf Creek for drinking water, resulting in bank erosion and sediment transport. Livestock have also been identified as a source of bacteria and nutrients.

The goal of this project was to improve the off-stream water system to prevent livestock from entering the creek. A small OWEB grant and DEQ-319 funds were used to construct an off-stream water system for the livestock.

A secondary intake was established at Wolf Creek and two 1550 gallon storage tanks were purchased to increase off-stream storage capacity. A distribution system of pipes was also constructed to move water to a trough in field that did not previously have water.

Grant Creek Off-Stream Water System

This project addressed the same issues as the previous Project. Livestock frequented adjacent streams to access drinking water resulting in bank erosion and sediment transport.

The goal of this project was to construct an off-stream water system. This project was funded through an OWEB small grant. Technical assistance was provided by NRCS.



WATER QUALITY AND HABITAT RESTORATION PROGRAM

Lincoln SWCD partners with landowners, watershed councils, and the Oregon Department of Fish and Wildlife (ODFW) on multiple projects annually whose primary goals are restoring functional habitat within streams and upland areas for use by fish and wildlife.

Barclay Meadows



Lincoln SWCD staff work across a wide range of ecosystems to implement projects with the goal of maintaining or improving watershed function and habitat. With the help of technical guidance from multiple partners, in the summer of 2016 Lincoln SWCD staff oversaw the placement of 21 logs and 6 root wads in a tidal channel within the Alsea Estuary. These “mini-logjams” create essential habitat for smolting salmonids. Not only does the wood provide a place for ocean going juvenile salmon to hide, but macroinvertebrates inhabit the underside of the logs proving a nice food source for all small fish.

Little Rock Creek Restoration

In 2016 Lincoln SWCD began work on a restoration project in the Little Rock Creek subwatershed.

Livestock fencing helps reduce the direct nutrient input into our streams and lowers the erosion sometimes caused by our hooved friends.



WATER QUALITY AND HABITAT RESTORATION PROGRAM

Riparian plantings will help further diffuse nutrient runoff and when mature; cool the stream with shade during the summer heat. For this project a total of 6400 feet of wildlife friendly fence was installed along 0.8 miles of the stream. Hardened crossings and off stream watering areas aid in reducing sediment and turbidity in our streams.



Program and Project Funding

The Water Quality & Watershed Restoration Program is largely funded by the Oregon Department of Agriculture (ODA) and the Department of Environmental Quality (DEQ). Individual projects were implemented with grant funds from a variety of sources including: Oregon Watershed Enhancement Board (OWEB), the Alsea Stewardship Group, and the City of Newport.



INVASIVE SPECIES CONTROL PROGRAM

Program Goals

The Invasive Species Control Program (ISCP) coordinates available State and Federal resources to address the highest priorities for eradication of invasive plants including planning to address future introductions. This program develops and carries out control plans, monitors Lincoln County natural resources and provides education and outreach materials for Lincoln County residents. The ISCP works with many partners throughout Lincoln County, the State of Oregon, and abroad to facilitate prevention and successful control of invasive species across many private and public landowners. The ISCP has become a county leader in vegetation control for environmentally sensitive areas, although the ISCP provides assistance for any invasive plant species, the program is particularly skilled in responsible control practices for riparian and wetland invasive plants.

Early Detection and Rapid Response (EDRR)

Early detection and prevention are central tenets of the ISCP's integrated weed management approach. The ISCP works to provide education and outreach to Lincoln County landowners and partners about high priority invasive plants and to carry out early detection (survey and inventory) and rapid response (control and removal) of newly introduced or highly controllable populations of invasive plant species. The ISCP is currently the central contact center for invasive species reporting in Lincoln County. An updated list of targeted weed species and species of concern can be found at the district's website: www.lincolnsxcd.org or for a map of the distribution of invasive species throughout Oregon, you can visit: <http://www.oregon.gov/ODA/programs/Weeds/Pages/WeedMapper.aspx>

Current Projects :

Policeman's Helmet (*Impatiens glandulifera*)

Policeman's helmet is an annual flower that is displacing native vegetation along the rivers of Lincoln County. It's large stature and dense growth result in direct competition and reduction of native vegetation.

In 2016 and 2017 the ISCP mounted control efforts for policeman's helmet in all of the major river basins except the Alsea. Infestations in the Siletz, Yaquina, and Yachats River Basins have been reduced to random plants from wayward seeds. The Schooner Creek and Salmon River basins have received intense control efforts over the past 3 years in which ISCP estimates the area affected from this invasive plant has been reduced by 80% over the last 3 years. Because policeman's helmet can be easily controlled by mechanical means (e.g. hand pulling or weed whacking), landowner participation will be paramount to successfully controlling this species into the future.



INVASIVE SPECIES CONTROL PROGRAM

Yellow flag iris (*Iris pseudacorus*)

In 2017 the ISCP was able to combat yellow flag iris again and was happy to see that many of the sites previously treated had no regrowth. Our efforts were concentrated on estuarine channels and riparian areas for the 2017 field season where we were able to locate and treat 102 different sites.



Knotweed Control Project (*Fallopia & Polygonum spp.*)

The ISCP has carried out a comprehensive, county-wide knotweed control project since 2009. This project is aimed at controlling, reducing and preventing further spread of highly invasive, nonnative knotweeds throughout the entire county. Knotweeds are perennial shrubs native to Asia that were once a popular ornamental. However, when introduced to wild areas, knotweeds have the capacity to invade and replace our riparian areas with monocultures of unproductive habitat. Due to their large rhizomatous root (i.e. lack of fine root structure) and since they die back during the winter months, knotweeds do not provide as much stream bank stability as native plants and sometimes can increase erosion.

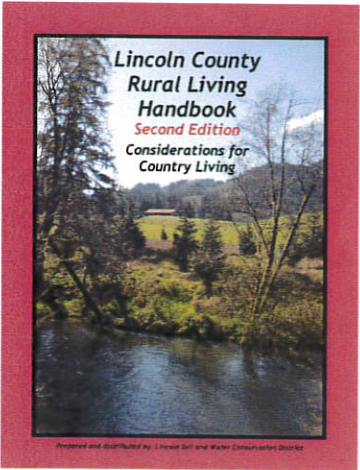
SAF

bank

In 2016 the ISCP treated 202 sites with our crew of 3. We covered over 130 miles of stream to survey and control this persistent invader. Since the start of our comprehensive control program in 2009, ISCP has reduced the area affected from knotweed by more than 20 net acres in Lincoln County.

RURAL LIVING HANDBOOK

In 2015 Lincoln SWCD released the second edition of the ^{free} Lincoln County Rural Living Handbook. This book can provide Lincoln County residents with an easy way of identifying subjects of interest in their area. Copies are available at no charge by contacting the district office.



MIDCOAST MONITORING PROGRAM

The Mid Coast Monitoring Project (MCMP) is a multi phase effort spanning the entire year. These separate phases consist of Aquatic Habitat Inventories (AQI) conducted from June thru August. Adult Salmon spawning ground surveys consisting of Spring Chinook float surveys from September to mid October. Coho and Fall Chinook spawning ground surveys from late October to the end of January, and Steelhead/Lamprey Eel surveys from February to the end of May. Also included is Public and Educational outreach.

AQUATIC HABITAT INVENTORIES

Sites for Aquatic Habitat Inventories were chosen in a cooperative effort with Oregon Department of Fish & Wildlife (ODFW) and the Mid Coast Watersheds Council (MCWC). Selected sites were in places with proposed or completed restoration activities, or previous inventories that were out dated and new inventories were in order.

This provides baseline data for long-term monitoring of projects by documenting pre and post project habitat conditions. In addition to collecting AQI data, district staff will also digitize and collate the data in preparation for analysis by ODFW at the Aquatic Inventory Project headquarters in Corvallis Oregon. Both raw data and analyzed data are available in the Lincoln Soil & Water Conservation District (LSWCD) office and from ODFW where it is included in the ODFW statewide Aquatic Inventory Project data base. Also, all AQI data is entered into the Geographic Information System (GIS) data base by ODFW personnel. Digitized copies of the raw data are filed with ODFW and are also at the Lincoln SWCD office.

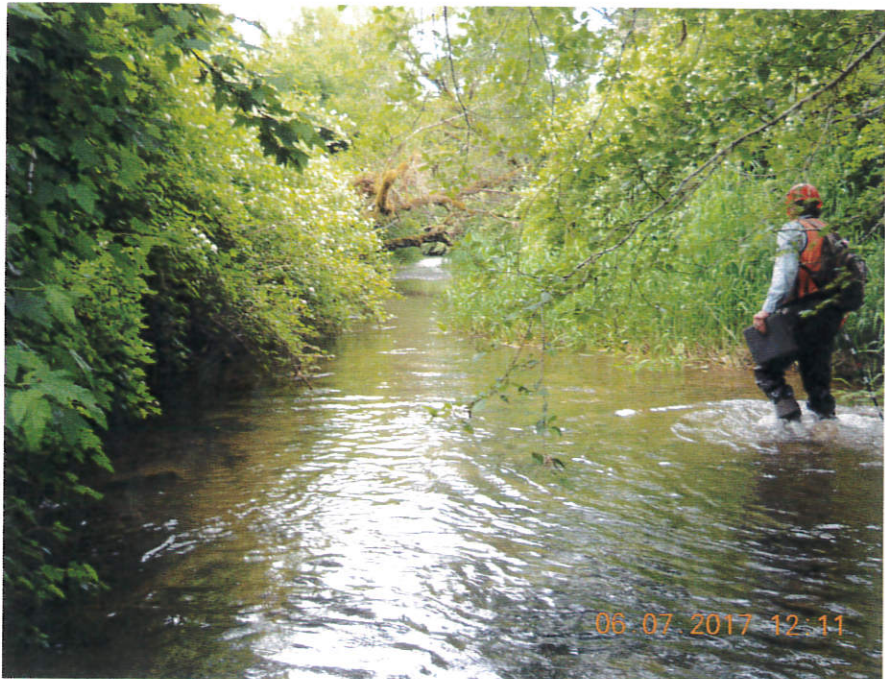
This fiscal year District AQI work was completed in two Basins, the Yaquina and the Siletz.

In the Yaquina Basin District staff inventoried Butter Milk Cr. which is a tributary of the mainstem Yaquina River. Butter Milk Cr. was last inventoried in 2007. A new Large Woody Debris (LWD) project was planned for Butter Milk Cr. and the MCMP crew was asked if they could do the pre-project AQI. Since the MCMP crew had done the first inventory in 2007 it seemed only fitting that the same crew should do the new inventory in 2017. The inventory was completed and is now in the process of digitizing the data.

The second inventory was on Mill Cr. in the Siletz Basin. Mill Cr is a long-term life cycle monitoring site. New large wood had been added to the stream and ODFW wanted to do a post project inventory to document any new trends in the habitat that the addition of the large wood had started. Another inventory will be done in about five years to see if the trends continue or if other habitat changes occur. The inventory was originally started by the Mid Coast Watersheds Council to be done in the Winter. Because of the horrible weather that we had last winter, the Council ran out of time and asked the MCMP crew to finish up the work. The MCMP crew finished the inventory, digitized the data that was collected and submitted the data for analysis.

Aquatic Habitat Inventory Sites
Butter Milk-----2.60 miles
Mill Cr.-----2.65 miles

Total 5.25 miles



The third stream district staff inventoried was Long Prairie Cr. in the Siletz Basin. A large restoration project for Long Prairie had been planned by ODFW in Newport and since they were ~~sort of~~ short-handed for AQI personnel they asked if District staff could help out by conducting the inventory for them. The District was more than happy to partner with them for the project.

Aquatic Habitat Inventory Sites

- Slack Creek-----3.0 miles
- Cougar Creek-----2.2 miles
- Long Prairie Creek-----6.5 miles

SPAWNING GROUND SURVEYS

Spring Chinook Float Surveys

The Spring Chinook Surveys on the Alsea and Siletz rivers start in the last week of August. In the Alsea River, District staff floats five different reaches that total about 20 miles. In the Siletz River, staff covers three reaches that total approximately 20 miles. These surveys are done every seven to ten days.

The Siletz surveys are a continuation of early Chinook data that we have collected for the past 20 years.

Chinook surveys continued until mid-October. At this time District staff switches over to Coho surveys and ODFW crews take over the Siletz drifts.

On the Siletz surveys District staff coordinated with Stan van de Wetering of the Confederated Tribes of the Siletz Indians (CTS) for DNA collection of tissue samples from lower river Chinook. Chinook numbers on the Siletz for 2016 seemed to be below average. On the Alsea River preliminary results of the float surveys indicated the Spring Chinook run to be down a bit but still good numbers.

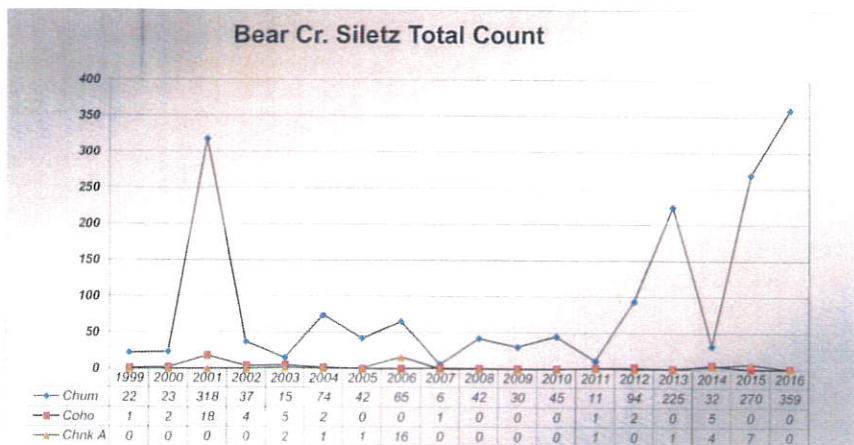
Coho, Chum Salmon & Fall Chinook Surveys

Coho Spawn Surveys are next, starting in mid-October of October and lasting thru January. These surveys are ODFW Random (computer generated), Supplemental surveys done on special request and Standard surveys (surveys that have been done on the same stream reach for many years). These surveys are generated by the Oregon Adult Salmonid Inventory and Sampling Project (OASIS) in Corvallis Oregon. These are walking surveys and usually are about one mile long. Any Fall Chinook that are encountered during these surveys are also counted. Length measurements and sex determination are taken

on every dead Coho that is found and scale samples on every tenth dead Coho.

Chum Salmon are surveyed on Bear Creek in the Siletz Basin. This survey starts in late October and continues until about the first of December. The Chum run in Bear Creek in 2016 was the highest since 1999 with a total count of 359 fish.

Lincoln Soil and Water Conservation District
Survey Results 1999-2016



In 2016 the District staff conducted Coho surveys on 18 survey sites totaling about 14.22 miles. These were in the Yaquina, Siletz, Alsea, Yachats, Big Cr and Beaver Creek basins. Coho abundance in the Mid Coast area was 26,488. Coast wide there were 75,904 fish for the estimated Coho abundance for the Oregon Coast ESU. The results of 2016 Fall Chinook surveys in the Siletz River was an estimated escapement of 8,479 adult spawners, in the Alsea River 17,485 and for the Yaquina 8,662.

SPAWNING GROUND SURVEYS

Steelhead Spawning Surveys

The District staff started steelhead surveys at the beginning of February and surveyed until the end of May. These surveys are conducted every 10 to 14 days. With Steelhead the redd (a fish's nest) count is more important than the actual number of fish seen. Steelhead do not die after spawning and tend to leave the spawning grounds shortly after spawning has occurred. As a result not many Steelhead are seen during the course of the spawning season. In order to get a population estimate redd counts are used in determining the number of adult steelhead. To prevent counting redds twice, a brightly colored rock is placed in the observed redd and left there until the redd is completely healed in and no longer visible. The rock is then removed from the healed redd.

In 2017 District staff surveyed 18 stream reaches covering 16.12 miles in 5 different basins. The number of Steelhead in the Mid Coast in 2017 was 13,257. 2017 was not a very good year for Steelhead. Lamprey Eels are also surveyed while surveying Steelhead. Lamprey Eels usually start running about the middle of April and continue to the end of May. The Yachats River Basin had the highest lamprey numbers in surveys conducted by the District.



PUBLIC AND EDUCATIONAL OUTREACH

Before conducting any surveys, an extensive search is performed to contact and obtain permission from any landowners whose land District staff might cross during the completion of a survey. These permission request contacts offer an opportunity for District staff to engage landowners in discussions about salmon habitat issues. This kind of interaction sometimes results in future habitat enhancement opportunities.

The District staff gets landowner contact information by looking up property tax lots on ARC View in the GIS system. The landowner is personally contacted by phone by one of the surveyors. At that time District staff obtains verbal permission for access from the landowner and logs the time and date that permission was granted. If there are many landowners on one side of the survey and one owner on the other, (possibly a timber company), staff will try to get all the smaller landowners possible and the one larger landowner, then the entire survey is covered on one side or the other. If one landowner owns both sides of the stream then District staff must get permission to go thru, or else go around that segment so as not to trespass. On the Random surveys ODFW sometimes makes the property owner contacts for the District .

When landowners are contacted, they are informed that any information gathered while conducting a survey on their land is part of the public record. District staff also asks if the landowner would like copies of the data or the results of any analysis of surveys that have been conducted.

Public outreach continues to be an important part of this project. District staff partner's with agencies, Watershed Basin Planning Groups and local schools, doing watershed presentations and demonstrating watershed function with the stream table provided by the Lincoln SWCD. District staff frequently uses their field knowledge to provide information and locations of stream sites to Lincoln SWCD and Mid Coast Watersheds Council staff. We also make our library of collected data available to all agencies, researchers and any other interested parties. The data is compiled in binders and organized so as to be readily accessible to anyone who might need it.

Occasionally, calls come into the Lincoln SWCD office from property owners about situations of concern on their property or other issues in the watershed. District staff fields these calls and tries to answer questions or connect people with the individuals or agency that can best assist them with their needs. District staff takes advantage of every opportunity to talk with property owners and others in the watershed about salmon habitat, restoration and other watershed issues. From requests for permission for access for survey work, to visits with folks met during surveys, the District staff provides an opportunity to answer questions and promote the importance of watershed restoration. The District invites people to participate in the Watershed Council process, and gives them information on who to contact for further information on restoration projects for their own property.



62 YEARS OF DIRECTORS AND ASSOCIATE DIRECTORS—THANK YOU!

Arden Howard	James Kent	Mark Saelens	Robert vanCreveld
Bella Ross	Jeff Jackets	MB Noble	Rufus Cate
Bob Deskins	Jerry Kosydar	Mel Rigdon	Russ Glascock
Bob Nichol	Jim Dunlap	Ned Lentz	Ryan Gassner
Brown Wakefield	Jim Holt	Norma McMillin	Shirley Zeek
Calvert Jones	Jim Stafford	OS Knox	Sterling Grant
David Compton	Jodie Skeels	Paul Gerber	Terry Keady
Don Kessi	Joe Steenkolk	Phillis Hawkins	Tim Miller
Don Shaffer	John Wit	Quinn Murk	Tony Pearson
Elmer Patterson	Ken O'Dell	Ray McDuffee	Wayne DeMoray
Gene Cooper	Ken Zeek	Rennie Ferris	Wayne Hoffman
Hap Ayers	Kenneth O'Dell	Rick Priest	Wiley Gibson
HJ Kasner	Lester Hall	Rob Jacobsen	Willow Kennedy
Irvin Hobart	Lloyd Hansler	Robert Gribble	



DISTRICT PARTNERS IN CONSERVATION

Alsea Watershed Council	OR Conservation Employees Association Network
Alsea Stewardship Group	Oregon Department of Agriculture
Benton Soil and Water Conservation District	Oregon Department of Environmental Quality
Bio-Surveys, LLC	Oregon Department of Fish and Wildlife
Bureau of Land Management	Oregon Department of Human Services
Cascade Pacific RC&D	Oregon Department of State Lands
City of Lincoln City	Oregon League of Conservation Voters
City of Newport	OSU Extension
City of Siletz	OSU Sea Grant
City of Toledo	Oregon State Parks and Recreation
City of Yachats	Oregon State Weed Board
Confederated Tribes of the Siletz Indians	Oregon Watershed Enhancement Board
Dahl Disposal Inc.	Salmon Drift Creek Watershed Council
Devils Lake Water Improvement District	Siletz Charitable Community Foundation
Eddyville Charter High School	Siletz Watershed Council
Hatfield Marine Science Center	Siuslaw Soil and Water Conservation District
Lincoln County Commissioners	Siuslaw Watershed Council
Lincoln County Public Works	Starker Forest Incorporated
Lincoln County Solid Waste	Surfrider Foundation
Marys River Watershed Council	USDA—Natural Resources Conservation Service
MidCoast Watersheds Council	USFS—Siuslaw National Forest
Mid Coast Cooperative Weed Management Area	Wetlands Conservancy
Plum Creek Foundation	Western Invasives Network
Oregon Association of Conservation Districts	Yaquina Watershed Council
Oregon Coast Aquarium	